

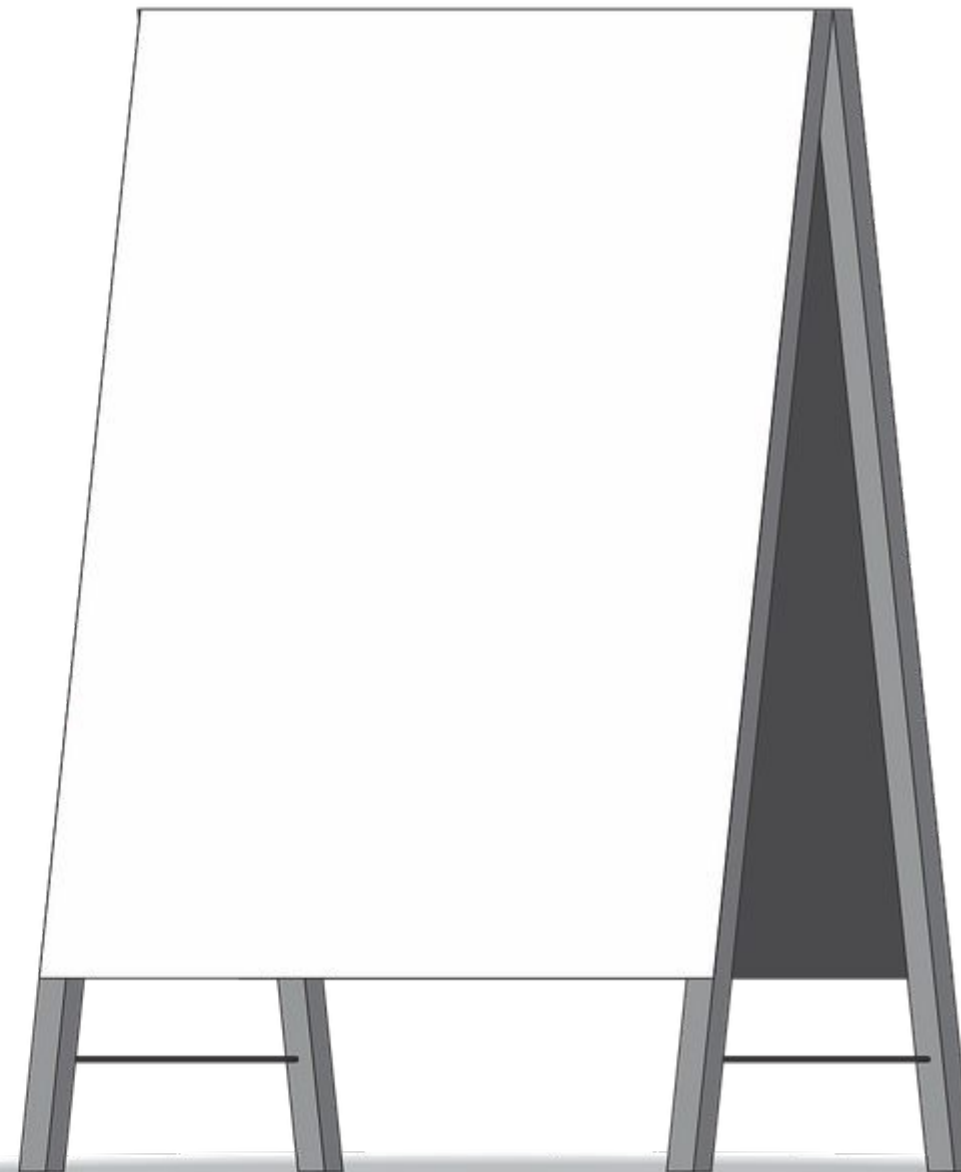
Welcome back Community Advisory Team Members



Help yourself to the refreshments and dinner



Visit the site design precedent boards to share your style preferences





WESTMINSTER
MUNICIPAL COURTHOUSE PROJECT

Community Advisory Team Kick-Off Meeting #3

May 1, 2024



WESTMINSTER

- 01 Reminders
- 02 CAT Meeting #2 Recap & Feedback Wrap-Up
- 03 Group Breakout Discussions
- 04 Group Share Out
- 05 What's Next

01 Reminders



Please respect times set for sharing

Help us foster communication by respecting feedback time limits, allowing all participants the opportunity to share



02 CAT Meeting #2 Recap

- Based on current meeting pace, we've reduced topics from three to two and increased the amount of time to discuss
- We've increased the amount of time for feedback at the end
- We will need to limit summaries to two minutes

02 CAT Meeting #2 Feedback Wrap-Up

Speaker for the group: please give a **2 minute** update based on the previous discussions:

- 1 Accessibility/Equity & Safety**
 - Biggest barriers to accessibility on the current site?
 - How can a building help to facilitate equitable access to community justice?
 - In your mind what are the most significant safety concerns for the site?
 - How do you feel those items could be addressed?

- 2 Site Amenities board reactions**

(high level review of precedents - additional discussion to follow today)

GROUP 1
ACCESSIBILITY, EQUITY
& SAFETY

- * Sidewalks
- * Traffic / Speed of Traffic
- * Noise from Hwy 36.

EQUITY

- * Good Neighbor
- * Integrity
- * Communication
- * Easy Access to Site (Handicapped Accessible)
 - Equal Building Access
 - Lift vs Ramp

SAFETY

- * Prisoners (Enclosed Sally Port)
- * Children (Traffic)

GROUP 2
ACCESSIBILITY, EQUITY
& SAFETY

BARRIERS

BUS STOP/
PUBLIC TRANSP.

TURNPIKE TRAIL

LIGHTING

NEIGHBOR CONSIDERATION

EQ. ACCESS

WELCOMING

INVITING SPACES

SAFETY CONCERNS

LIGHTING

WAY FINDING

PUBLIC SAFETY

↑ HOW CAN WE ADDRESS ↑

CREATE CIVIC PRESENCE

GOOD VISIBILITY - LIMIT BLIND SPOTS

PUBLIC ART

GROUP 3 ACCESSIBILITY, EQUITY & SAFETY

Barriers:

- hard location to get to
- not visible / in a residential area
- Can't make the left hand turn
- Families, Jurors, victims, defendants - all come through the same door
 - ↳ division of entrance / restrooms

Equitable Access:

- Separate entrances / spaces
 - not intimidating space
 - ↳ Calming space
 - ↳ Warm / welcoming
 - Inviting Jury rooms
 - Clear wayfinding
- } Public & Staff

Safety concerns:

- lighting (dark sky style)
- Common spaces
- traffic unpredictability w/ turnpike Dr.

How do we Do this?

- good interior design
- good landscape / site design

GROUP 4 ACCESSIBILITY, EQUITY & SAFETY

① Barriers to Access

- Lack of sidewalks / existing sidewalks too narrow
- A lot of stairs + lack of ramps
- Lack of public transportation options

② How can a building facilitate equitable access to community justice

- ADA !!
- Signage / Wayfinding
- Improved sidewalks, more railings
- multi-lingual
- Comfortable
- Feeling of pride
- Feeling of wellbeing
- windows / natural light

③ Most significant safety concerns

- Visibility in / out of the building
- Speeding
- Adequate lighting

④ How can these items be addressed?

- Site Lighting: tasteful, down lighting (awareness of neighbors)
- ~~speed~~ traffic calming measures

PRECEDENT IMAGERY

GROUP 1
SITE DESIGN
PRECEDENTS

Signage / Way finding

Well mark pedestrian Access

Gathering Space / Seating
Tables / Chairs

Green Space

Lighted Pedestrian Areas

Art (but not too modern or too dramatic) (Balanced)

Open enough to view entire campus

Red

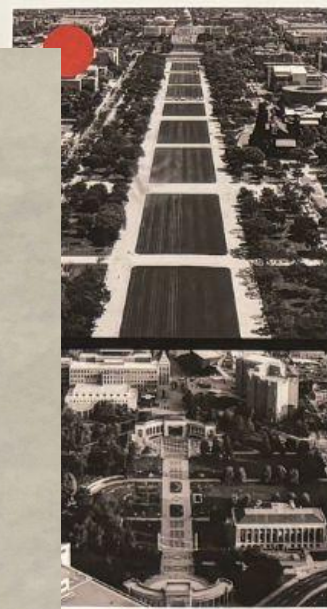
On Sidewalk wayfinding

Too Much Glass (Heat/Cool issues)

Too Closed In.

Overhang

Not Inviting / too Institutional



'Mall' Concept

- Formal/civic (geometric, axis)
- Allee of trees (shade, navigation)
- Defined hierarchy (walks, plantings)

Pedestrian Allee



Arrival



Promenade



Connectivity



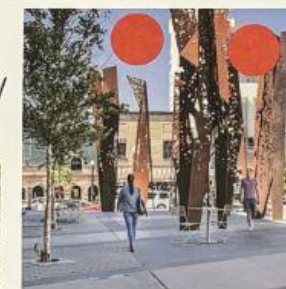
Lawn



Seating/ Waiting/
Shade/ Plaza/
Reflective/ Private/
Meeting



Gathering



Screened/ Shaded Seating



ANDERSON
HALLAS
ARCHITECTS



DHM DESIGN

Group #1

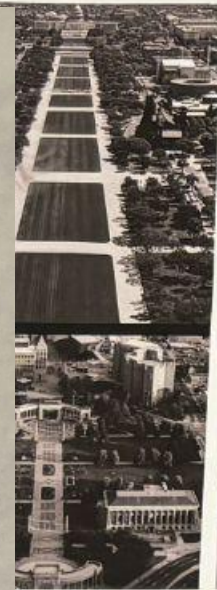
PRECEDENT IMAGERY

GROUP 2
SITE DESIGN
PRECEDENTS

(LOWELL & BOTH)

- + PEDESTRIAN CONNECTIONS
- + OUTDOOR SPACE (MEETINGS/LUNCH)
- + GREENERY
- + BENCHES (MINDFUL)
- + ART
- + INTEGRATED ELEMENTS

- TOO MUCH ROCK
- FLAT
- TOO MUCH CONCRETE
-



'Mall' Concept
- Formal/civic (geometric, axis)
- Allee of trees (shade, navigation)
- Defined hierarchy (walks, plantings)



Pedestrian Allee



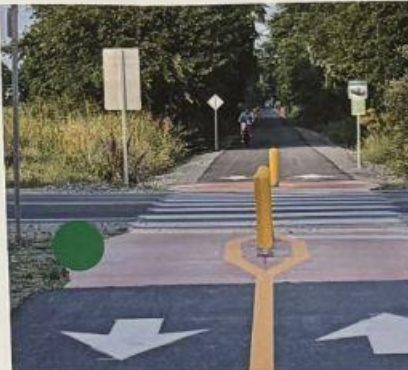
Arrival



Promenade



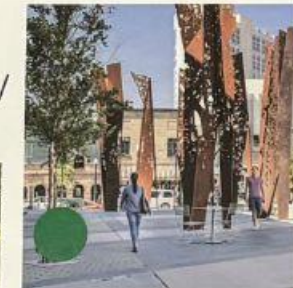
Connectivity



Seating/ Waiting/
Shade/ Plaza/
Reflective/ Private/
Meeting



Gathering



Screened/ Shaded Seating



GROUP 3
SITE DESIGN
PRECEDENTS

- > images/architecture is too governmental
- > like the clear entry but with greenery, not too much concrete
- > plantings that are native/natural looking
 - ↳ liked Orchard entry shown in meeting #1
- > Multimodal path is safe, clear, accessible
- > Stationary Seating = big rocks, movable would be taken
- > Missing:
 - Statues/art (not modern/bland+historical)
 - Shade Structure or Coverings
 - ↳ natural & built

-> Natural play Structures



'Mall' Concept

- Formal/civic (geometric, axis)
- Allee of trees (shade, navigation)
- Defined hierarchy (walks, plantings)



Pedestrian Allee



Arrival



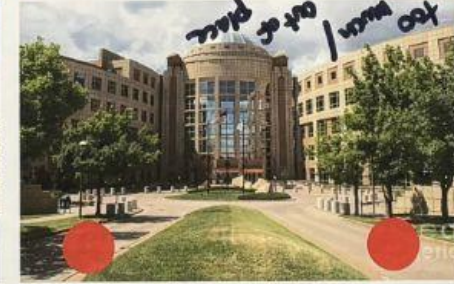
Promenade



Connectivity



Seating/ Waiting/ Shade/ Plaza/ Reflective/ Private/ Meeting



Gathering



Screened/ Shaded Seating



GROUP 4 SITE DESIGN PRECEDENTS

Likes

- Landscaping
- Walkways w/ landscaping around them
- Xeriscape
- Windows
- Lawn
- Trees/shade
- Symmetry
- green spaces for use by community / staff
- signage
- walkways w/ a purpose

Want the site to be timeless too
Interesting character to different site elements
(artistic, memorable)



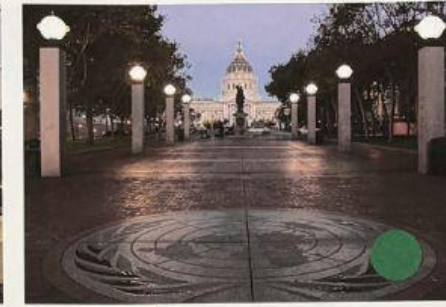
'Mall' Concept
-Formal/civic (geometric, axis)
-Allee of trees (shade, navigation)
-Defined hierarchy (walks, plantings)



Pedestrian Allee



Arrival



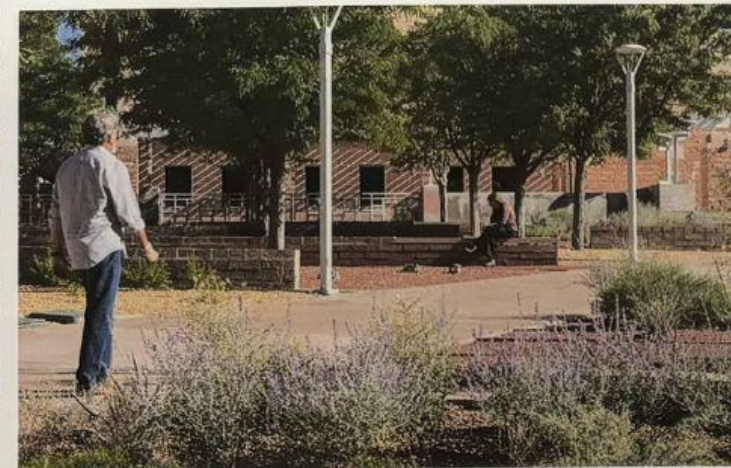
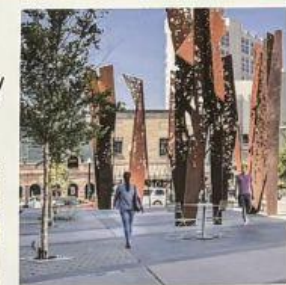
Promenade



Connectivity



Seating/ Waiting/
Shade/ Plaza/
Reflective/ Private/
Meeting



Screened/ Shaded Seating



03 Group Breakout Discussions

Assign Table Roles: facilitator, note taker, timekeeper, group speaker

**Site Amenities
(15 minutes)**

**Playground
(15 minutes)**

• Return here for group share out •

04 Group Share Out: Site Amenities

Group Speakers please share comments from your group (limit 2m)

- Which site amenities are most important to you?
- What opportunities do you see for unique site amenities at the site? (i.e. public art? Sculptures? others?)

04 Group Share Out: Playground

Group Speakers please share comments from your group (limit 2m)

- Prefer playground equipment to have more traditional structures, or be more thematic in design (customized and/or sculptural)?
- Is there interest in incorporating learning opportunities into the play features of the playground (history, process, civics)?
- What playground equipment would you like to see, even if not shown in the examples?

05 What's Next?

- Our **next CAT meeting date**, time and theme
- **Save the Date: Upcoming Project Open House**
Date & Time: May 22, 6-9 pm
Location: MAC - 3295 W 72nd Ave
- Please **distribute your open house invites** to neighbors and friends



- Sketch plan created from City and CAT feedback.
- To be developed between now and open house for community feedback.