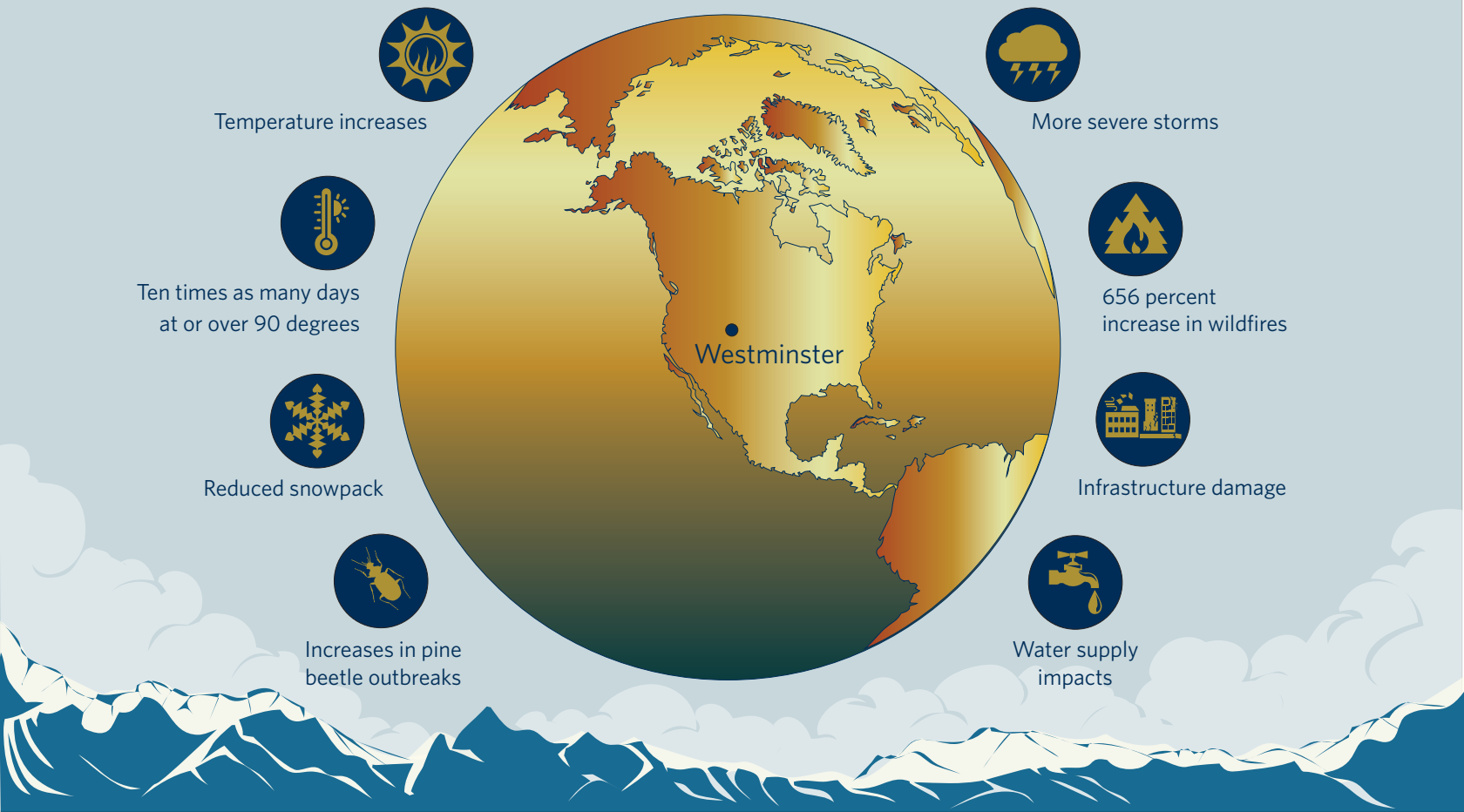


# 2017 COMMUNITY GREENHOUSE GAS INVENTORY



## REGIONAL IMPACTS OF CLIMATE CHANGE



## How Westminster is leading the community



The City of Westminster is committed to creating a sustainable community to enhance quality of life and community resilience, generate economic growth, and create equitable access to services for the entire community. Westminster is focusing on reducing energy and transportation costs for the community, improving air quality and providing critical services that meet resident's needs. A key part of that work is understanding key sustainability issues facing the city and developing strategies to address those issues, one of which is the community's greenhouse gas (GHG) emissions. **This summary represents the results of Westminster's first-ever communitywide GHG emissions inventory and will serve as a baseline of emissions moving forward.**

The city's participation in regional and national climate initiatives (i.e., Climate Mayors and Colorado Communities for Climate Action) illustrate a commitment to participate in efforts to understand the city's role in issues that extend beyond its boundaries. This initial emissions inventory sets the stage for Westminster to understand, identify and implement strategies for reducing community emissions. Westminster is positioned to continue to be one of the most sustainable cities in America, and the city's commitment to understanding and reducing GHG emissions will result in a healthier and more resilient future.

# WESTMINSTER 2017 COMMUNITY GREENHOUSE GAS EMISSIONS

## A Summary of the Most Meaningful Findings

### KEY FINDINGS

Westminster's 2017 inventory was conducted in accordance with the Global Protocol for Community-Scale Greenhouse Gas Emission Inventories (GPC). The GPC is a global standard that provides a transparent GHG accounting methodology for reporting community GHG emissions. The 2017 inventory captures all emissions occurring within the city's geographic boundary. The 2017 Westminster GHG inventory shows a total emission value of 1,371,220 metric tons of CO<sub>2</sub> equivalent (mtCO<sub>2</sub>e), which is similar to most communities in the Front Range.

### Emissions by Source

Key findings from the inventory show that **emissions from on-road transportation (emissions from gasoline and diesel vehicles), building electricity (burning fossil fuels to produce electricity) and natural gas consumption are the three largest sources of emissions.** Together these sources comprise 86 percent of total emissions. Most of the remaining emissions sources are from aviation (estimated air travel for Westminster residents from Denver International Airport).

### Emissions by Sector

The largest share of emissions was from **transportation**, which comprised 48 percent of the community's overall emissions. The **residential and commercial/industrial sectors** followed, generating 25 percent and 24 percent of overall emissions, respectively. Emissions from the **decomposition of solid waste** were the fourth largest category, comprising 3 percent of total emissions.



### WHAT THE COMMUNITY CAN DO Implement Climate Change Mitigation Strategies

We can reduce emissions by reducing energy consumption for buildings and transportation, and waste generation. **Westminster can lead this charge by developing, facilitating, and implementing GHG reduction strategies for the entire community.** This GHG inventory is the first step of that process. By identifying a baseline of GHG emissions, Westminster can effectively target the best places to reduce GHG emissions.

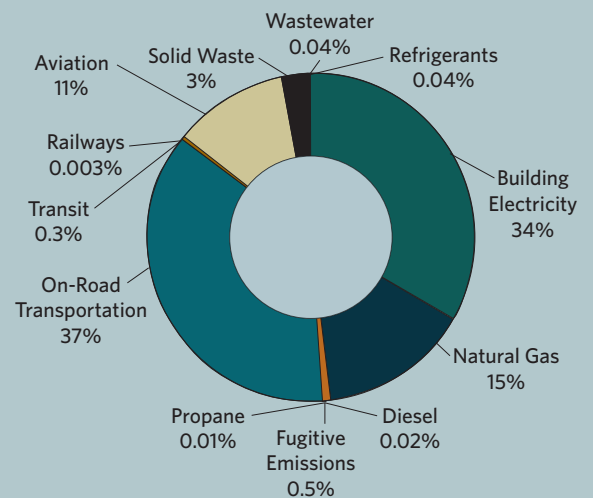
The community could focus on making homes and businesses more energy efficient, reducing water use (note: water use is a big energy user), using less gas by combining trips and taking transit, and even buying an electric vehicle. Many options also exist for owning or leasing solar energy. In addition, reducing waste generation and increasing recycling are also important. **For more information on what the community can do, check out the city's Sustainability page at [www.cityofwestminster.us/sustainability](http://www.cityofwestminster.us/sustainability).**

### COMMUNITY INVENTORY

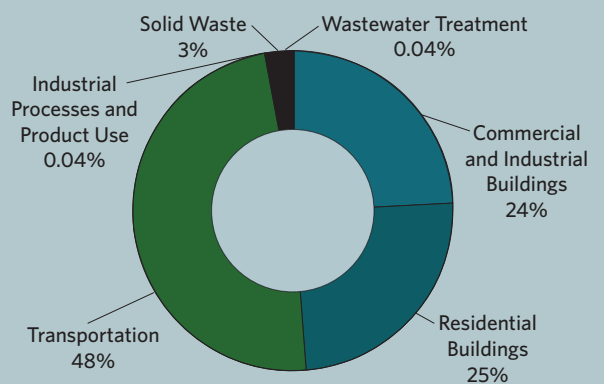


1,371,220 mtCO<sub>2</sub>e Total Emissions

### EMISSIONS BY SOURCE



### EMISSIONS BY SECTOR



### Contact Information

Paul Schmiechen  
Chief Sustainability Officer  
City of Westminster  
[pschmiec@cityofwestminster.us](mailto:pschmiec@cityofwestminster.us)