

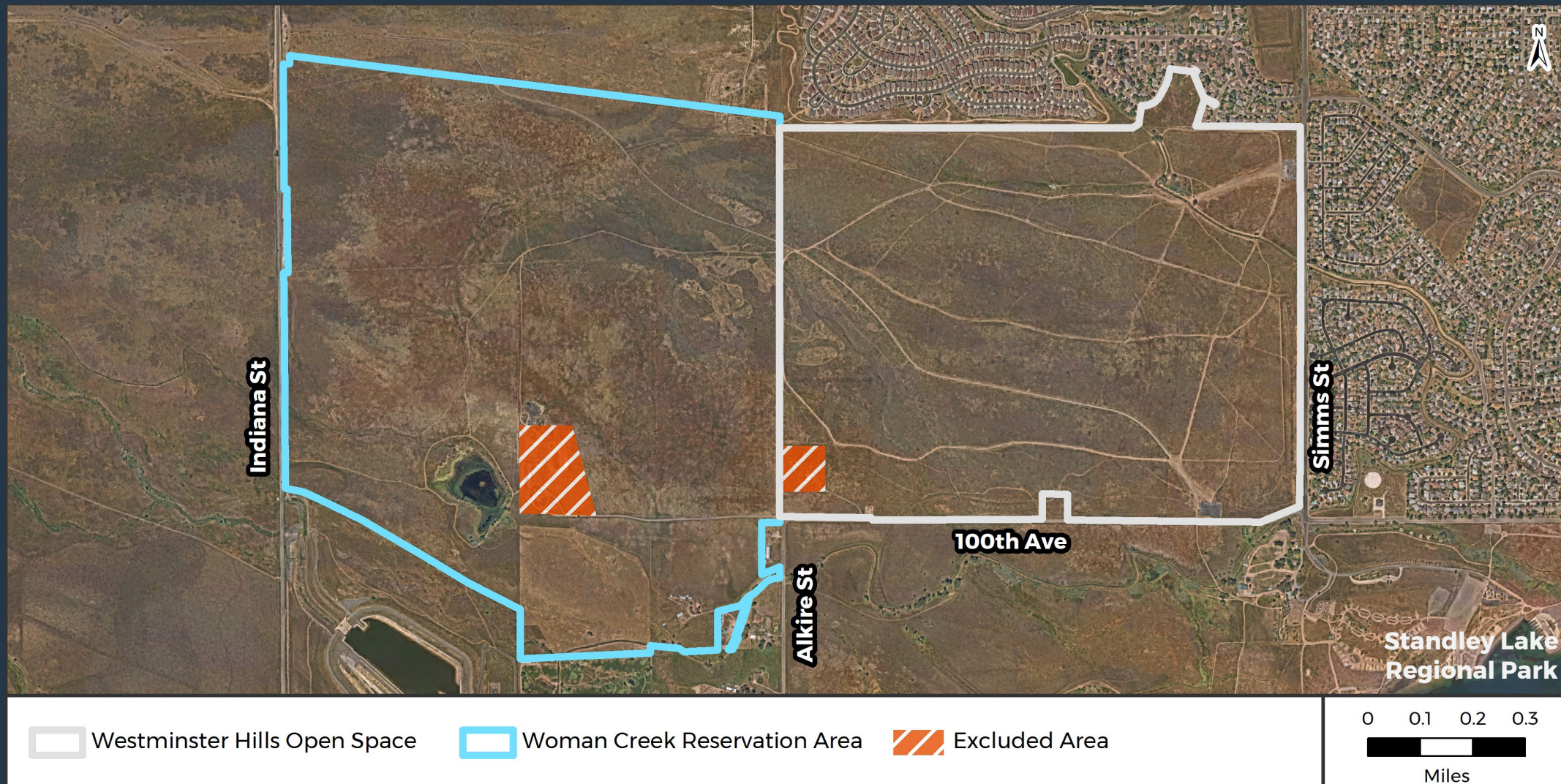
# WESTMINSTER HILLS OPEN SPACE

Purpose: Creating a Sustainable Management Plan



March 6,  
2024

# Westminster Hills Open Space (WHOS) Plan Area



# Parks

- “.....land improved with recreational facilities or community buildings...designed and maintained for active recreational uses.” City Code
- ***Open spaces will generally be open for passive public use and enjoyment, .....City Code***





## What is Open Space?

- .... preservation and protection of the quality of the natural environment that has given Westminster much of its character.....City Code

# Planning Timeline



## OCT-NOV 2023

- Current Conditions Report presented to Parks Recreation and Libraries Advisory Board
- Visitor Survey Results Available on Website

## DEC 2023

- Current Conditions Assessment Data Analysis
- Continued Ecological Assessment

## JAN 2024

- Westminster Hills Restoration Plan Open House

## FEB 2024

- Public feedback collected on the ERO Ecological Assessment Report 2nd Public Survey Conducted

## JUNE 2024

- Council Study Session presentation of Westminster Hills Open Space Area Management Plan

## MAY 2024

- Community Action Team Meeting (May 1)
- Community Action Team Meeting (May 15) (if needed)

## APRIL 2024

- Community Action Team Meeting (Apr 3)
- Community Action Team Meeting (Apr 17)

## MARCH 2024

- Community Advisory Team (CAT) Applications Available (Mar 4)
- Public meeting (March 6)
- CAT Application closes (8 am Mar 11)
- Community Advisory Team CAT Selections appointments Announced notified (Mar 13)
- First Community Action Team CAT Meeting (Mar 20)

***NEXT STEPS...***

# **ERO Conditions Report Key Issues**

WHOS popularity is straining the site's environment:

- More parking demand than spaces on busy days
- At risk wildlife
- Erosion
- Invasive Plants
- Undesignated trails
- Dog waste

# ERO Conditions Assessment

- Invasive plants and erosion
- Contaminated water



Invasive Kochia (aka  
tumbleweeds)



Topsoil loss and  
windblown sand



Loss of ground cover and  
water quality impacts



# ERO Conditions Assessment

- 175 tons of dog waste/year
- 1,000 lbs per “doggy bag”
- 9 – 250-gallon waste cans



>100 individual fecal piles in north sample area 20' wide x 100' long

# Conditions Assessment Findings – Trails Over Time



# Trail Conditions

- Ever-widening trail corridors cause erosion and impacts wildlife and native vegetation



# Conditions Assessment

- 391 parking violation notices have been issued in the past year



# Conditions Assessment Strategies

Regulations get more protective as you move from east (Off-Leash Dog Park) to On Leash, To west No Dogs

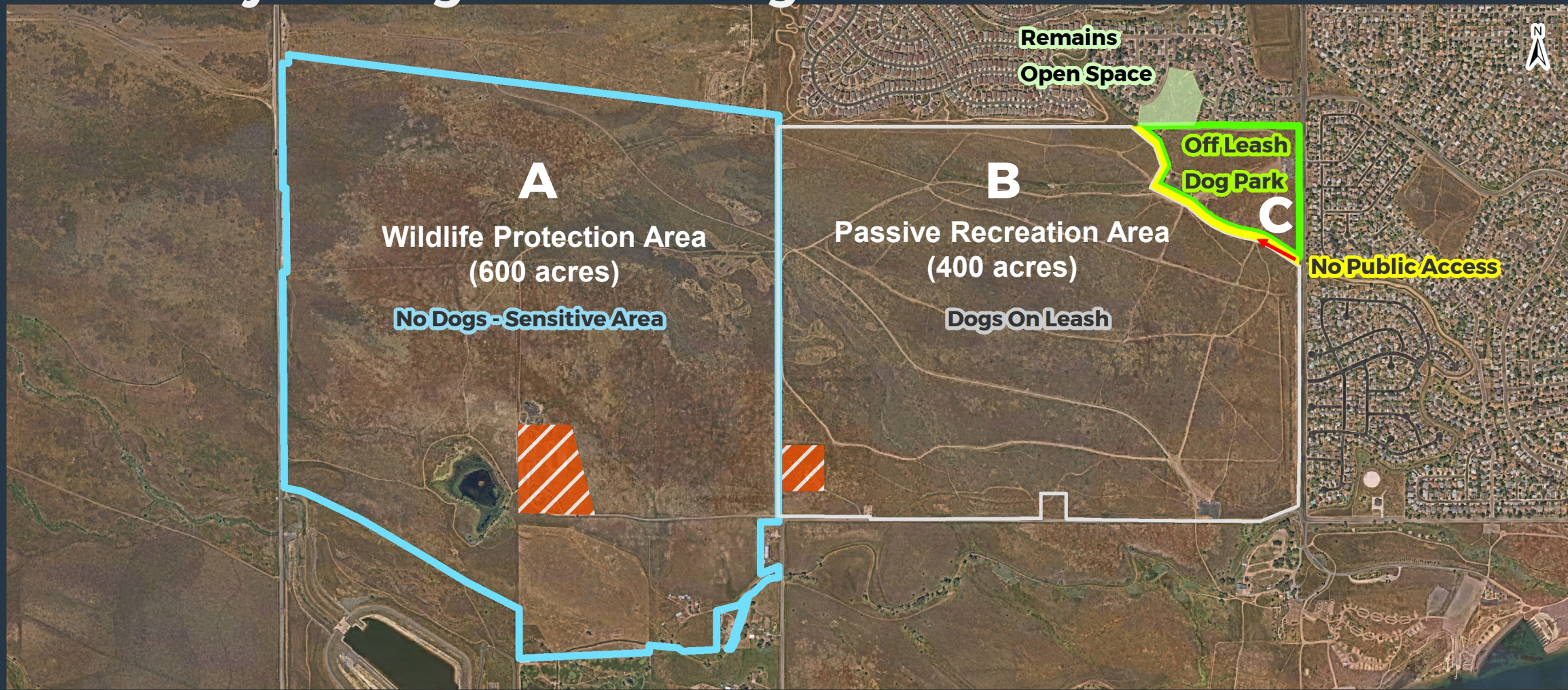
# East Side Preliminary Recommendation

Designate and manage the rest of the WHOS East side as a Passive Recreational Opportunity Area where **dogs are welcome**, but must be leashed and all hikers, bicyclists and dog walkers must remain on designated trails .

# West Side Preliminary Recommendation

- Restrict recreational uses (hikers and bicyclists) to designated trails and prohibit dogs (on or off-leash) in West area
- Close and revegetate all undesignated trails
- Incorporate educational and regulatory information at all trailheads
- Continue noxious weed eradication

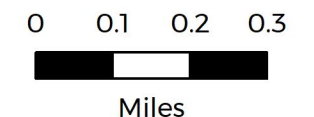
# Conditions Assessment Identified Strategies - Preliminary Management Designations



 Off Leash Dog Park  
 Dogs On Leash

 No Public Access  
 No Dogs - Sensitive Area

 Remains Open Space  
 Excluded Area





# Community Identified Options

- **Keep it the same:** No change to size of off-leash area
- **Shrink the off-leash area:** Off-leash area larger than 33 acres but smaller than 400 acres
- **Follow the experts' advice:** Conditions Assessment recommendation of 33 acres off-leash area
- **Build new dog parks:** Eliminate off-leash at WHOS and distribute off-leash dog parks throughout the City

# Community Options

## HOW

- Consider additional parking
- Consider adding explore fee-based operations
- Convert open space to park land
- Recruit volunteers

# NEXT STEPS

01

**Create a CAT**  
(application available  
March 4 - March 11)

02

**Online survey on  
the community  
suggestions**  
(March 6 - March 20)

03

**CAT meets over  
the next 60-90  
days** (March – May)

04

**Recommendation  
to City Manager**  
(May/June)

05

**Community meeting  
to share out CAT  
recommendations**  
(June)

06

**Review with City  
Council and  
adjustments to  
ordinance/land  
designation as  
needed** (June/July)

# QUESTIONS?

Tomás Herrera-Mishler  
Director of Parks, Recreation and Libraries

email: [therrera@westminsterco.gov](mailto:therrera@westminsterco.gov)

phone: 303-658-2177

