



WESTMINSTER  
COLORADO

# Water 2025

Design Working Group Meeting 2

Tuesday, June 2, 2020

# Agenda

1. Welcome: 11:35
2. COVID-19 Update: 11:40
3. WATER 2025 Update: 11:45
4. Review of Virtual Tour Survey Results: 12:00
5. Balancing Community Values and Resources: 12:10
6. Next Steps: 12:50
7. Meeting Ends: 1:00

# Welcome

- Thank you for your patience as we adapt
- Recording meeting for group members that can't attend
- Muting microphones
- Please ask questions in the chat or hold your question until the designated time for questions
- Will be following up with a recording of the meeting and a survey to document your feedback
- Survey results are anonymous
- Will follow up with our understanding of survey results
- Any issues? Don't hesitate to let us know

# COVID-19 and the City

- Our team hopes that you and your families are all well
- City COVID-19 information and resources can be found here:  
<https://www.cityofwestminster.us/covid-19>
- City and COVID-19 Responses:
  - Providing assistance to residents & businesses
  - City's overall strong financial position will help us weather the pandemic
  - WATER2025 program still moving forward

# WATER 2025 Continues to Move Forward

- Pilot Plant - Operating for over 2 months.

Possession of Site

Upcoming Activities over the summer:

- Continue pilot plant activities
- Signs at the site
- Survey of the site, including visible markers at corners

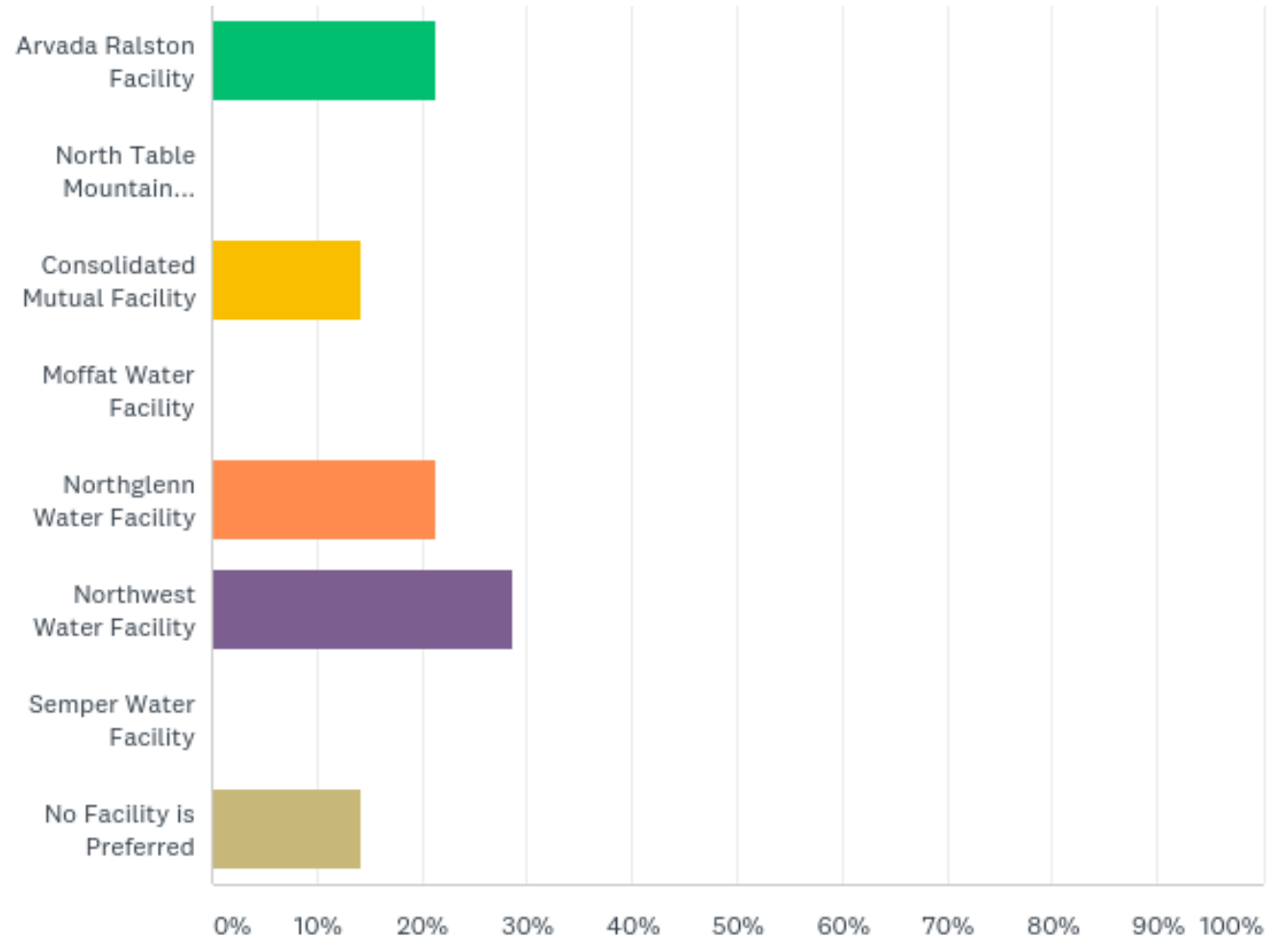
Begin Preliminary Design



# Questions Check-in

# Tour Survey Results

# Q1: Please select your favorite facility by clicking on one image below.





## Q2: Why did you make your choice in the previous question?

#	RESPONSES
1	I like the overall design
2	None of the examples blends in with the surroundings.
3	I like the front appearance that faces the street and that the industrial stuff is hidden. It has a low profile as well. There are natural elements incorporated into it.
4	Looks nice & natural without being pretentious. I like all the native looking evergreen trees as well
5	Doesn't look like an industrial facility, fits well into landscape.
6	test
7	Faculty blended in well with the surrounding community of buildings and architecture.
8	All examples are dated and do not fit with our specific location and surrounding environment.
9	Appears to be built in-ground with a low exposure. Should be easier to maintain, heat/cool, and not dominate the landscape.
10	I like the clean modern look with red brick, consistent with city hall and clock tower. Also like the modern fence and gate (not chain link!).
11	I like the look of the entrance
12	I think that it looks very clean. It has stood the test of time and still looks current even though it is older.
13	I like the tower and the brick color
14	I liked the open area, walking trails and distance from housing. Adjacent solar panels , facility is distanced from main road ( from what I could see)

## Q4: Please describe your preferred architectural style for WATER 2025

#	RESPONSES
1	Something timeless
2	Sleek
3	Low profile. Something that matches nearby architecture or incorporates natural elements.
4	Basically brick, not overstated or pretentious. Secure, but not industrial. A lot of native looking landscaping
5	Non-blocky, individual buildings, mixed colors.
6	test
7	Less of a specific style and more of a common community theme of complimentary materials, colors of building materials and building styles which complement each other thereof and
8	Modern Style architecture with materials such as wood, concrete, metal and glass. Clean lines and attractive. Taking into consideration the surrounding environment and neighborhoods for visual impact and respect to the existing landscape.
9	In ground.
10	Modern, low profile with clean lines, natural rock coloring. NOT industrial storage/metal warehouse look. Could be somewhat sunken, but if not, some nice glass window features.
11	something not very flashy
12	Modern with an opportunity to fit into the surroundings. Some plantings but most xeriscape.
13	I actually love classic style, but being more timeless I think a contemporary style with an emphasis on clean lines. Not a box, but fun.
14	Low profile, blends into the area and landscape, uses solar and alternative /reusable building materials, has trees and landscape to buffer it's appearance. Trails and habitat incorporated.

## Q5: What did you like about how facilities interfaced with open space and parks?

#	RESPONSES
1	I think it's a great idea
2	I like the architectural style that blends in with nature like the Northglenn facility (terracing) or the Consolidated Mutual facility that has trails and benches.
3	I didn't notice so much where the facility property ended. I love both open space and parks, but don't know that they need to be included with water facilities. I think garden areas would be nice, as long as they emphasized water conservation techniques.
4	Natural coloring, low profile, surrounded by green spaces.
5	test
6	I think this is of utmost importance and must be included in the building designs.
7	I did not go beyond the tour and look at the site plan, surrounding neighborhoods, and surrounding context to determine what I liked about that specific location. I do know I did not like the architecture and the public landscape design.
8	I did not notice anything blending with the environment.
9	I like the interface, and yet that the facility and more so, the storage areas, were somewhat camouflaged or screened by the park features. Like the walking paths and park features, e.g, benches, trees and landscaping vs. all open space.
10	it make the facility more part of the community
11	I like Northglenn because it is set back from open space and does not intrude.
12	We must support our open space, parks and nature. It is critical to have trees, bushes and plants.
13	It did not overtake the open space and seemed to be part of the area ( did not stick out)
14	...but additional parks and open space that is accessible to the public might be incorporated into the plan.

## Q6: What did you like about how facilities interfaced with open space and parks?

ANSWER CHOICES	RESPONSES	
Good trails/connectivity	60.00%	9
Landscaping matched open space	46.67%	7
Architecture type compliments open space character	60.00%	9
Landscaping was different from open space	6.67%	1
Landscaping provided visual screening of the facility	26.67%	4
“Back of house” functions (truck access, storage areas, etc.) were screened	60.00%	9
Total Respondents: 15		

## Q6: What did you like about how facilities interfaced with open space and parks?

#	PLEASE PROVIDE ADDITIONAL FEEDBACK BELOW:
1	Again, I don't think parks, trails, open space should be a priority of water production facilities.
2	test
3	I do not like the other examples.
4	The open space has nice existing gravel paths. It would be nice to have a paved path that connects up to the Big Dry Creek trail.
5	support walking and biking
6	We all know that water is becoming more and more costly so having a lot of grass to water I think sends the wrong message unless you are going to have baseball or soccer fields (Astro turf is an option). So natural landscaping or making a water wise smart garden may be a better choice.

## Q7: What didn't you like about how facilities interfaced with open space and parks?

ANSWER CHOICES	RESPONSES	
Fencing	33.33%	5
Little or no setback	40.00%	6
Landscaping matched open space	6.67%	1
Landscaping was different from open space	33.33%	5
Landscaping provided visual screening of the facility	6.67%	1
Architecture compared to open space feel	20.00%	3
“Back of house” functions (truck access, storage areas, etc.) were visible	46.67%	7
Total Respondents: 15		

## Q7: What didn't you like about how facilities interfaced with open space and parks?

#	PLEASE PROVIDE ADDITIONAL FEEDBACK BELOW:
1	Water 2025 facilities should fit in, but park and open space and trails should not be part of the water production budget.
2	test
3	I did not like the other examples.
4	I'd want some setback from Westminster Blvd but not so much that it intrudes too far into the open space.
5	If the landscape of is done well and can be easily maintained than it should be a success story. The landscape of at City Hall is well done other than there is too much traditional grass; some is great but there are now great grass alternatives that look great and require less water.

## Q8: Did you notice any security features? If so, what security features did you notice?

#	RESPONSES
1	Fencing
2	Fencing and gates and security lights
3	What I noticed seemed to be mainly deterrents. I would like to see something more substantial. Something that would stop a planned operation, at least long enough for help to arrive.
4	Fences, gates, distance from roads
5	test
6	Security setbacks, access to facilities controlled by systems of security gates, buildings protected by complementary Ballard's.
7	I did not. Beyond my expertise and don't believe our group should focus on this.
8	Fences and gates were shown. Did not notice anything else.
9	I noticed a lot of the fencing and gates. I think any chain link fencing is very unappealing. I much prefer the look of the fencing and gate at the Westminster Northwest facility. I didn't see many cameras but assume you'll need them. Would prefer any strategies to minimize light pollution.
10	cameras
11	I noticed a lot of fencing. I thought that was off putting but it is necessary.
12	I did not notice, but I am sure there are cameras
13	Road to facility was away from main road, ability to screen who is coming when road is obscure. Cameras and I am sure there were other detectors not visible.
14	Obviously, fencing will be required but it would be great if it was more appealing than chain link. In Westminster Tri-State off of Huron has done a nice job with their fencing and I know it is a high security facility. Cost is always an issue but I don't think we want it to look like a prison!



## Q9: Do you have a preference on fence type for Westminster's new facility?

#	IF YES, PLEASE EXPLAIN.
1	I like the fencing at Westminster Northwest. It is black and looks more like wrought iron fence you would find around a mansion as compared to the awful chicken wire fencing in most other facilities that looks like a prison.
2	Similar to what the Northwest facility has. Brick with de through iron in between. Substantial, but not industrial.
3	Set back from most roads, except in entrance(s)
4	test
5	Fencing which conceals unappealing operations
6	Verticality is important in ways it is secure and minimizes view sheds. Ensure that the fencing is transparent and secure.
7	Yes, like that of the Westminster Northwest facility. In case you missed it above, please, no chain link fencing. :)
8	It needs to blend in and not look like a guard house.
9	A fence needs to be functional and beautiful. Invest the money to have a great fence.
10	Please see previous statement.

## Q10: Some of the tour facilities were adjacent to residential housing. What were your thoughts when you saw the proximity of the housing?

#	RESPONSES
1	I thought it was far enough to not bother anyone
2	Too close
3	I liked how the architecture and style of both Northglenn and Consolidated Mutual matched the surrounding community. The former had some features so that it looked like a school one would find in a neighborhood as opposed to an industrial complex. The latter had architecture that looked like houses... it belonged in the neighborhood.
4	Not well thought out. Does not fit in with any security planning or aesthetics.
5	Seemed distanced enough.
6	test
7	I liked the idea of community access to the surrounding open space designs.
8	I did not go beyond the tour and look at the site plan, surrounding neighborhoods, and surrounding context to determine what I liked about that specific location. I do know I did not like the architecture and the public landscape design.
9	The caution is to understate the public so that the private dominates.
10	My initial thought was that I wouldn't want to live that close to such a facility, but in fairness, I have no experience upon which to base that.
11	none
12	I thought some of the housing was very close. Too close.
13	I did not see this.
14	I thought there needed to be more trees and larger buffer. The point is to keep both houses and facility as private as possible and safe.
15	Buffer zones need to be incorporated for a number of reasons and those directly impacted should have input.

## Q11: Do you have any additional thoughts or reactions that are not covered in the questions above that you would like to share with us?

#	RESPONSES
1	I think being one with nature is most important thing with design
2	I am concerned about light pollution and would like to ensure the design takes this in to consideration (especially given proximity to open space and migratory paths). I do not want something that looks like a prison. I would prefer a low profile building. I don't know what type of noise is associated with this kind of facility but I would like some consideration given to noise pollution.
3	Security should be first on the list, followed by the facility appearance. Gardens, trails, parks, open space, etc. should be toward the bottom of the priorities. Just want it to fit in and not look bad. Dies not need to be a showplace.
4	Not sure if size of facility will set requirements on architecture. The larger the facilities, the more industrial looking they were. Would be great if that could be avoided.
5	test
6	This location is unique. I truly understand view corridors, how to present images for understanding obstruction of views and how public perception thinks objects will block there view. In all reality, a building only obstructs a person view very minimally. It is all determined on distance, proximity and angle. This building will not obstruct anyones views based on its location and surrounding neighborhoods. It will, however affect those walking along the open space trail experience. No one is ever continuously looking out at the horizon, but they will complain if something is out or the norm. Ensure there are attractive elements to the rear layout and design of the facility. Most won't be to concerned on the west elevation side as it is mostly seen by vehicular traffic. It would be great to see some attractive architecture, however. Not just building design, but ways to apply landscape design. I live very near by and can understand what i will see with the final construction when i walk the open space. It won't be as bad as anyone thinks, but it is not an excuse to slack on cost and design. If you need further assistance in providing 3D perspectives for view study's, let me know.
7	No.
8	Just a question: it seemed like a number of the facilities were close to some type of reservoir. Will there be a need to create/build that at the new facility?
9	no
10	I am so disappointed that this wonderful opportunity for community involvement will be cut short or hampered. I hope we can continue to give feedback.
11	I think you are doing a great job and so glad the city is supporting its staff! Please stay safe and well.
12	Not at this time

# Community Values and Focusing Resources

# Community Values to Focus our Resources

- Resources, particularly funding, are limited and need to be focused to area of greatest need and impact
- Input on where to spend resources
- Architecture
- Mobility
- Education
- General Site aesthetics

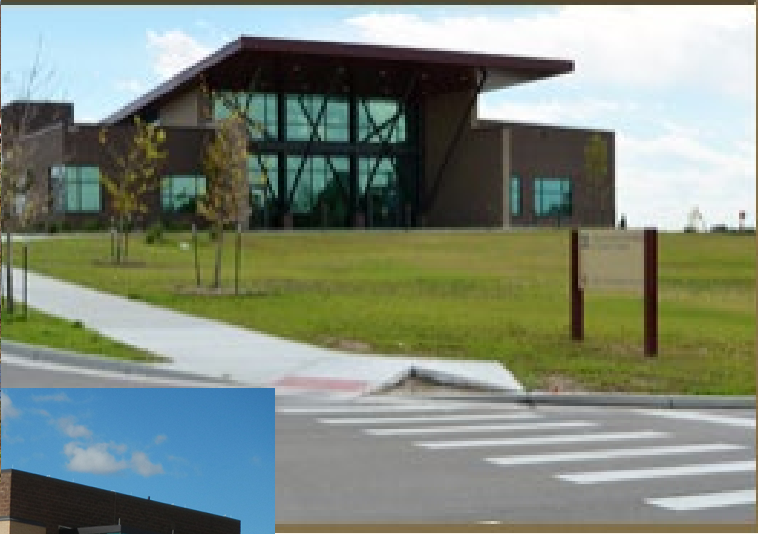
# Architecture

- Discuss survey results
- Architecture can impact cost. Prefab metal building significantly less than stone facade.
- Within using brick, concrete block, and poured concrete (including colored/stamped concrete), prices are similar.

# Architecture



# Architecture





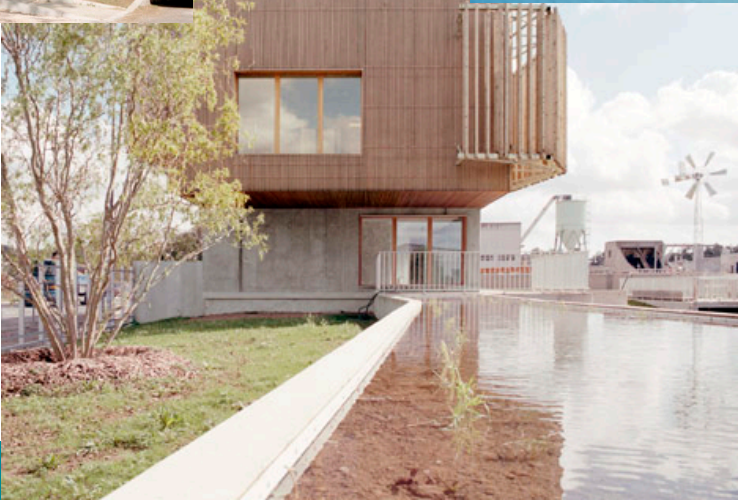
# Architecture



# Architecture



# Architecture



# Architecture



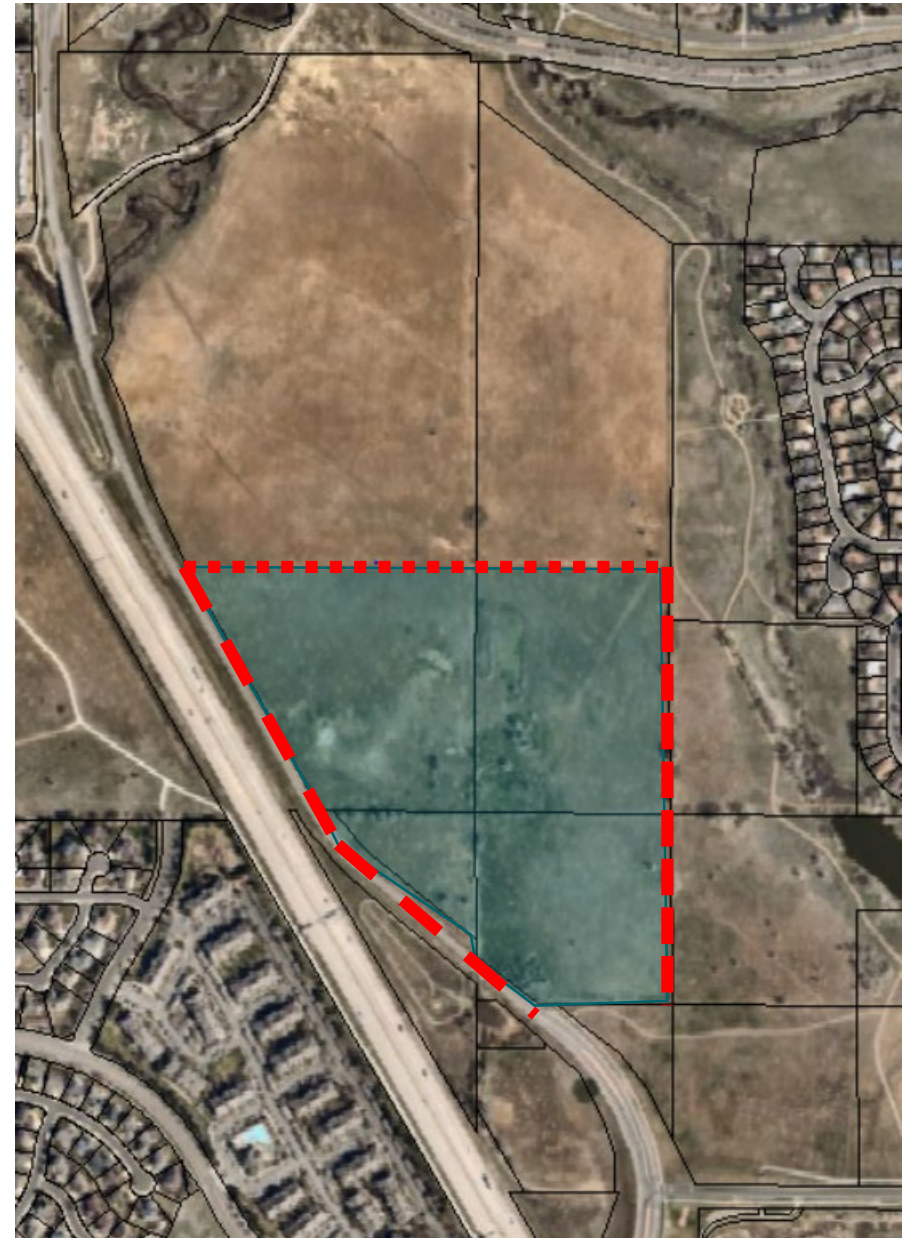
# Mobility

- Where are the important connections?
  - For pedestrians?
  - For cyclists?



# Mobility

- Minimum Connection is along Westminster Blvd.
- Other connections?
  - North property line
  - East property line
  - Within open space
- Pathway type
  - Concrete
  - All-weather surface (crusher fines)



# Chat Check-in

# Education

- Maintain public/private space division for site security
  - Separate building
  - Area within administration building that is front facing
  - Outdoor space only
- Initial staff thoughts:
  - Pilot Plant visible to visitors
  - A minimum of a small area within the administration building to accommodate groups viewing the pilot plant



# Education

- Considerable
  - Museum-type exhibits inside and/or outside
  - Conference room
  - Art infused
- More modest
  - Simpler signs
  - Fewer exhibits
- Public Space
  - Rentable venue
  - Recreating (walking, bird watching, picnic areas)

# Education



The interactive poster allows members of the public to scan QR codes and view on their phones either segments or the entire video. Photo courtesy of Brunswick Sewer District staff.



# Education



The Administration Building at the NTP Facilities includes a Visitor's Center with interactive displays to provide educational opportunities to the public.



alamy stock photo

J8E1ND  
www.alamy.com

# General Site Aesthetics

- Landscaping
  - Suburban (green lawn, deciduous trees, bushes, etc.)
  - Open Space with plantings (native grasses, some trees, some native bushes)
  - Open Space grasses but no additional plantings
- Fencing
- Open basins vs enclosed process (for solids handling)

# Site Aesthetics - Landscaping



# Site Aesthetics - Landscaping



# Site Aesthetics – Fencing

- Material (see-through visibility desired)
  - Chain link
  - Welded metal
  - Metal
- Supports
  - Metal posts
  - Brick posts
- Other
  - Razor/barbed wire at top
  - Angle at top
  - Anti-climb (buckle in the middle)

# Site Aesthetics - Fencing





# Site Aesthetics - Fencing



# Chat Check-in

# Site Aesthetics – Solids Handling

- Solids Handling choices have an impact on capital and O&M costs
- Solids Handling is to remove water
  - Recycle the water treatment to be conservation oriented
  - Water is heavy – easier to transport the solids for reuse as more water is removed
- Solids handling Choices:
  - Large open basins (gravity and evaporation)
  - Engineered open basin (gravity and evaporation in a smaller footprint)
  - Mechanical (equipment based and enclosed in a building)

# Solids Handling - Open Basins

Open Basins:

- Any shape
- Multiple cells
- Concrete bottom
- Ramp for truck entry
- Rotate use so that a basin can dry completely to remove the settled solids
- Westminster's have a reddish tinge from iron based treatment chemicals



# Solids Handling - Engineered Basins

- Similar to large open basins but significantly smaller
- More expensive to construct and operate than open basins
- Designed for faster settling/evaporation through use of sand and perforated piping
- Multiple Cells
- Ramp for truck entry
- Rotate Use



# Solids Handling – Mechanical Processes

Equipment is used to press or spin the water out.

Equipment is in a building

Most expensive to construct and operate

Provides more consistent product for reuse

# Next Steps

# Next Steps

- Will follow up with recording of meeting and survey
- May have additional surveys on architecture and landscape
- Next meeting will be the first Tuesday in October
- Broad public outreach after next meeting
- Feel free to call or email any of us