

# Westminster Transportation & Mobility Plan

## Phase 3 Summer 2021 Community Engagement Highlights

Community input is important to help inform the development and implementation of the Transportation & Mobility Plan (TMP), ensuring the plan meets the current and future transportation and mobility needs of the community. Each of the three phases of the plan development process includes community outreach and engagement, designed to build upon the previous phases' activities.

### COMMUNITY ENGAGEMENT ACTIVITIES OVERVIEW

The third and final phase of community engagement of the plan development process was completed June 28 - July 19, 2021. Input was gathered through an online survey, available in English and Spanish. Community member and stakeholder comments were also received by email and input received during meetings with organizations, agencies and City Boards and Commissions. Participants could provide their contact information at the end of the survey for a chance to win a gift card.

The survey gathered community input on each of the 11 chapters and Appendix D (Corridor Profiles and Projects) in the draft Transportation & Mobility Plan. The first question for each chapter asked participants to indicate their level of agreement with a chapter or specific chapter content; the second question was available for open input about the chapter. Optional demographic questions were also asked to summarize from whom and where the project team received input. Highlights from the results are shown in this report. All comments received on the draft TMP are shown in Appendix C: Community and Stakeholder Engagement.

### SURVEY PARTICIPATION



**120** survey  
participants



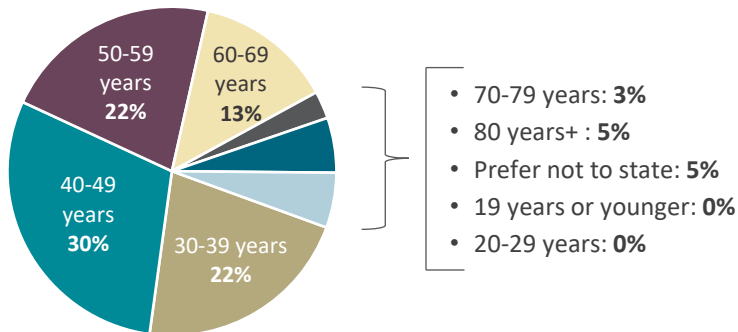
**315+**  
comments

Number of participants and comments includes those participants that provided input through email or during meetings.

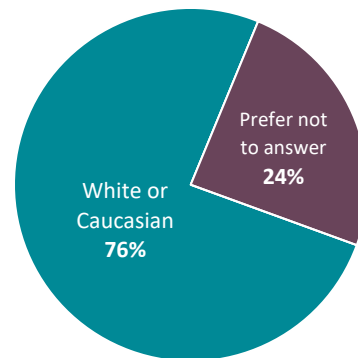
## WHO WE HEARD FROM

Data based on the 37 responses to these questions. These questions were indicated as optional.

### Age of Survey Participants



### Race of Survey Participants

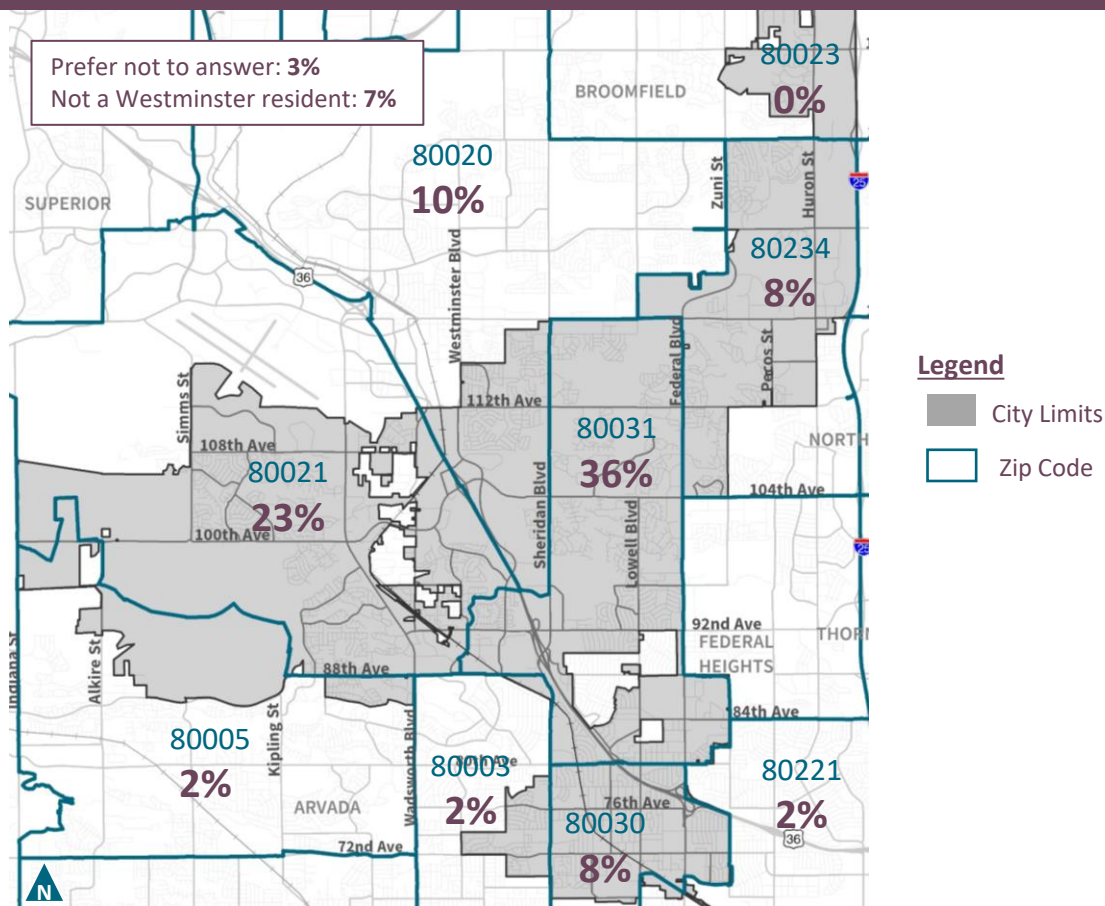


### Hispanic, Latino or Spanish Origin:

Mexican, Mexican American, Chicano: 8%, Puerto Rican: 8%, prefer not to state: 83%

## WHERE WE HEARD FROM (residence zip code)

Data based on the 116 responses to the question in the online survey. Zip code data shown below does not reflect community members or stakeholders that provided comments through email or during meetings.

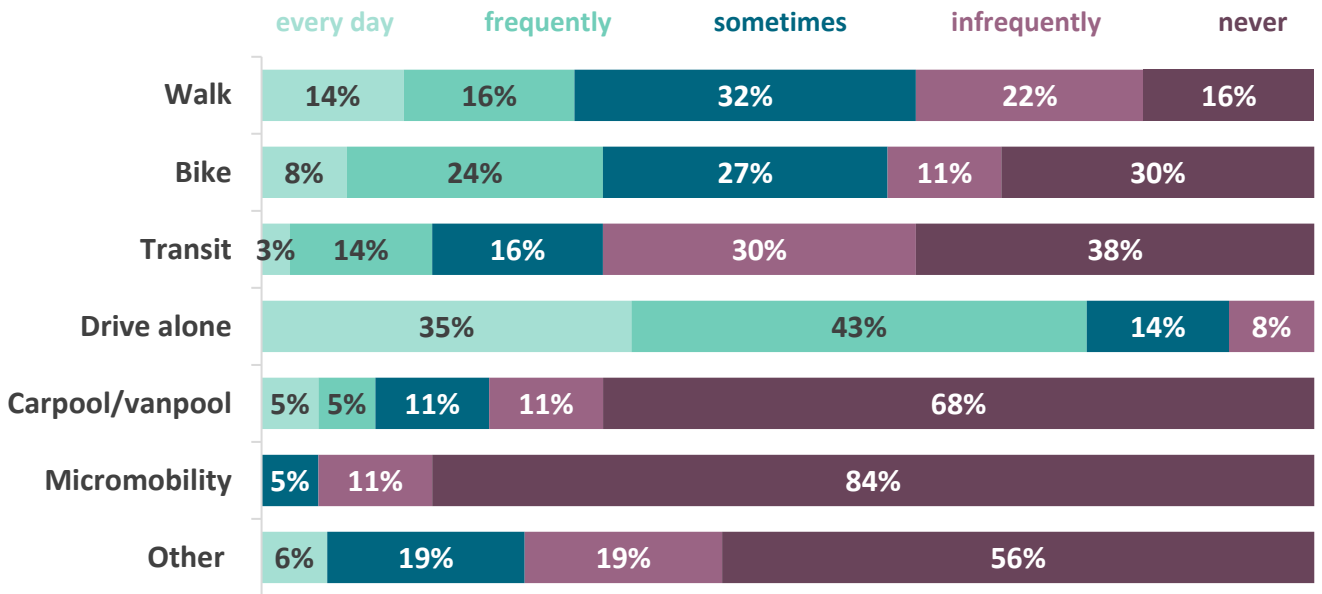


Note: Percentages may not total to 100% due to rounding.

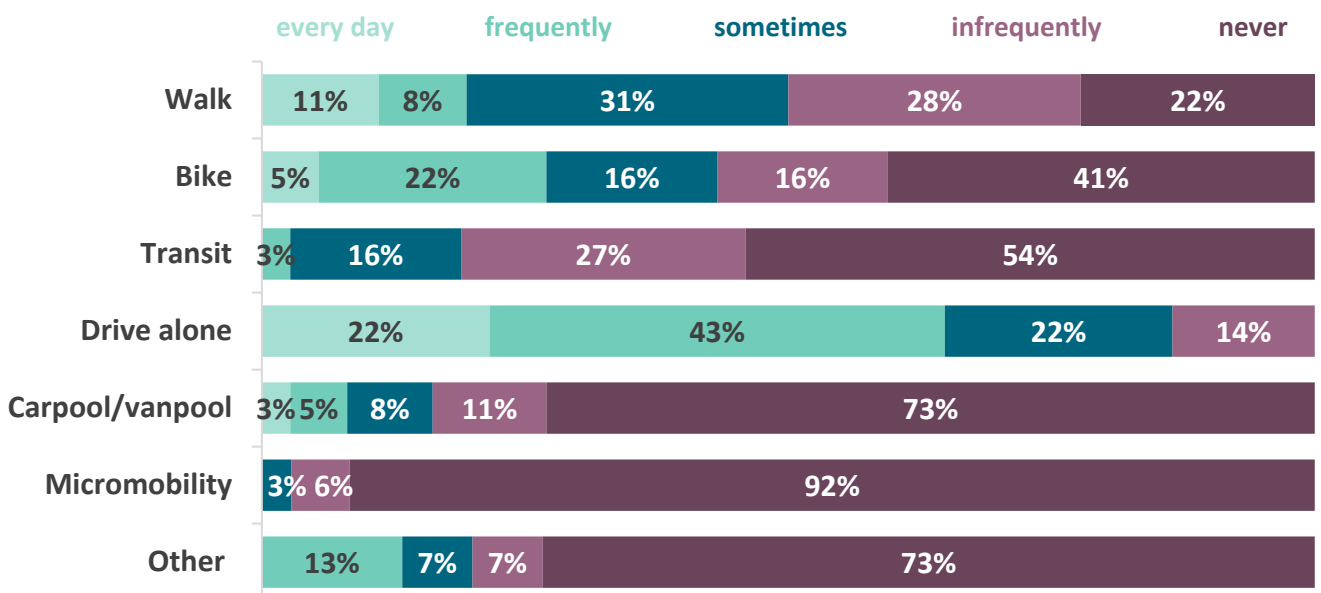
## HOW PARTICIPANTS TRAVEL

Data based on the 37 responses to these questions.

Participants were asked how often they would use the following transportation modes, *before social distancing guidance was in place*, to get to/from work, school, errands, and social activities.



Participants were asked how often they *currently* use the following transportation modes to get to/from work, school, errands, and social activities.



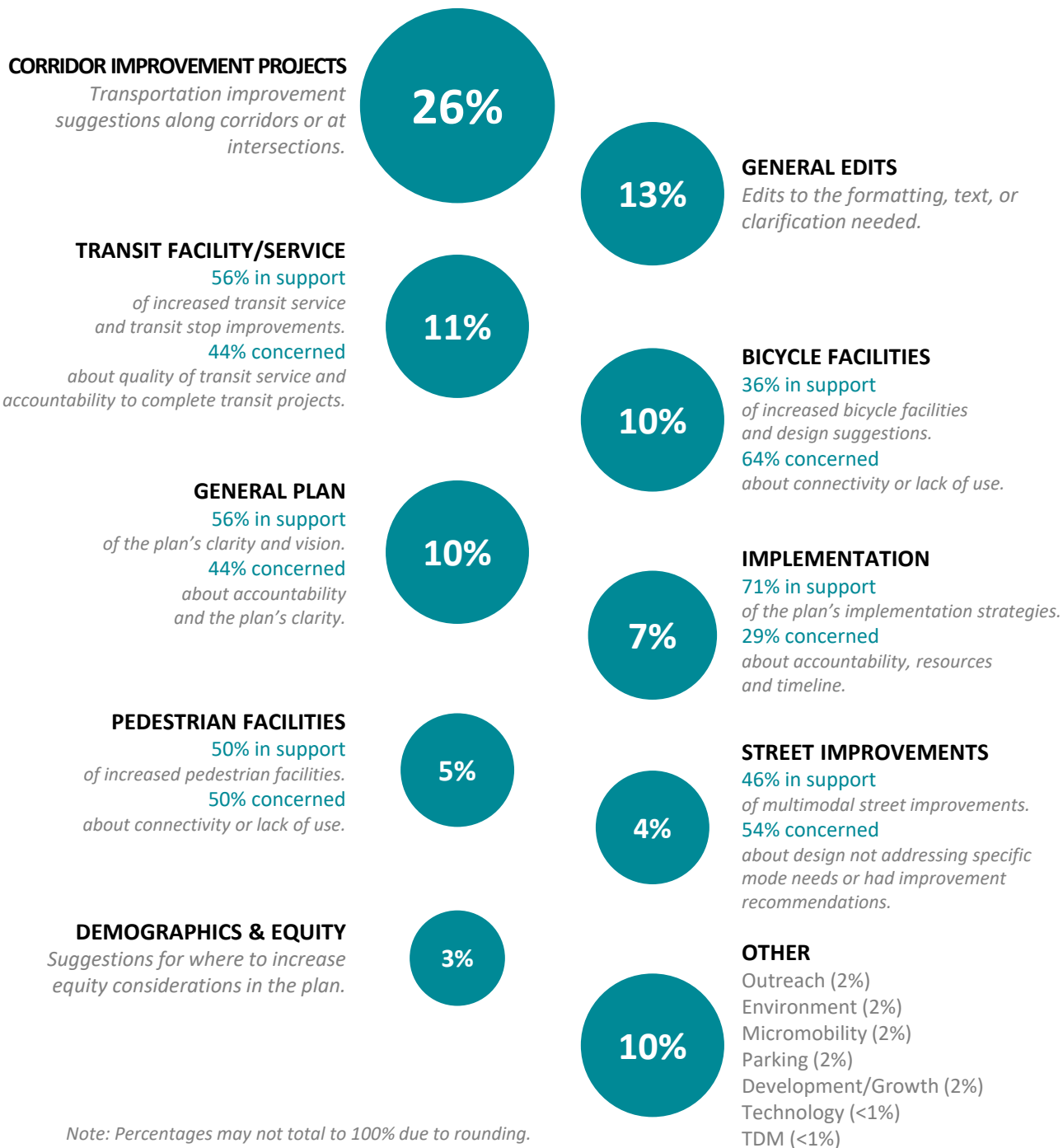
Note: Percentages may not total to 100% due to rounding.

## OPEN-ENDED COMMENTS THEMES

Data based on the 316 open-ended questions and comments to the plan.

Participants commented on the Transportation & Mobility Plan through per-chapter open-ended questions in the online survey and comments provided through emails and during meetings. These comments were evaluated and used to inform revisions to the plan, as needed. The comments were categorized into the following themes.

A short description can be found after each the category title, as well as a breakdown of comments in support of or concerns that were expressed about the plan or specific plan content. All comments received on the draft plan are listed in Appendix C: Community and Stakeholder Engagement.



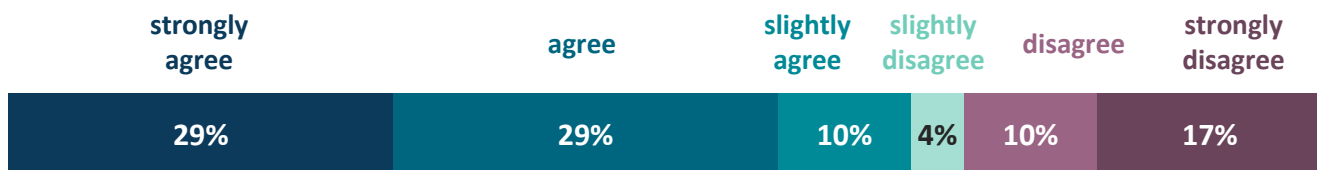
Note: Percentages may not total to 100% due to rounding.

## CHAPTER 1: INTRODUCTION

Data based on the 48 responses to this question.

Chapter 1 describes the need for Westminster’s Transportation & Mobility Plan, the process for developing the plan, and offers an overview of the current conditions of the transportation system in Westminster.

Participants were asked if the introduction clearly defines why Westminster should have a transportation plan to address the current and future transportation and mobility needs of the community.

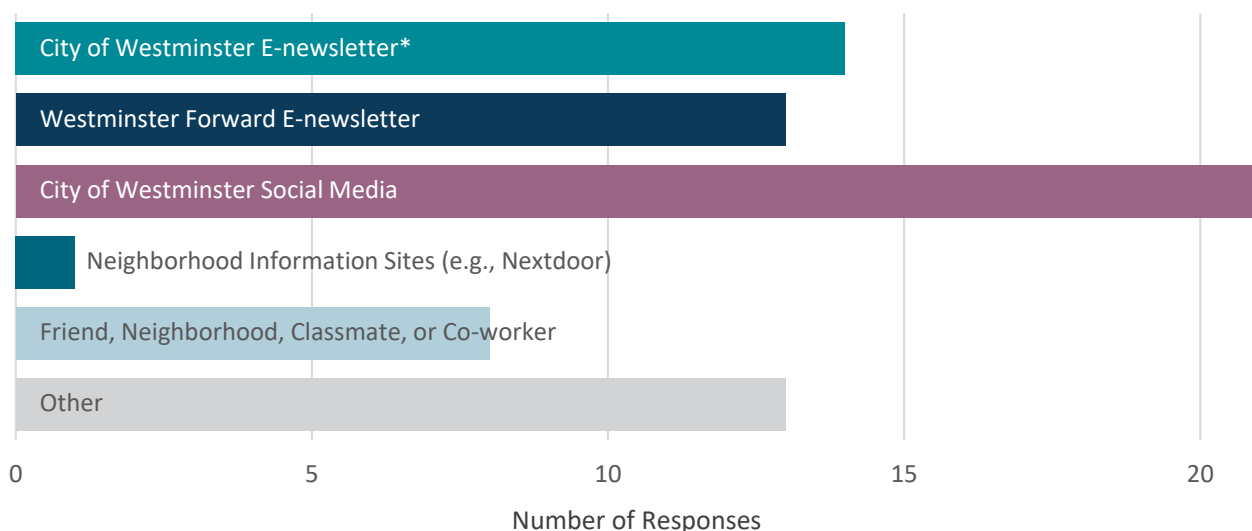


## CHAPTER 2: COMMUNITY AND STAKEHOLDER ENGAGEMENT

Data based on the 70 responses to this question.

Chapter 2 describes the community engagement process and how the community input was used to inform the development of the Transportation & Mobility Plan.

Participants were asked how they heard about opportunities to provide input during all phases of the development of the Transportation & Mobility Plan.



\*The Weekly was only available during TMP community outreach Phases 1 and 2.

Note: Percentages may not total to 100% due to rounding.

## CHAPTER 3: VISION AND GOALS

Data based on the 38 responses to this question.

Chapter 3 presents the Transportation & Mobility Plan vision and seven goals as the foundation of the plan, to ensure the plan and implementation of the plan meet Westminster’s transportation and mobility needs, as well as to support other local and regional goals.

**Participants were asked if the vision and goals represent what should be achieved to meet the transportation and mobility needs of Westminster.**



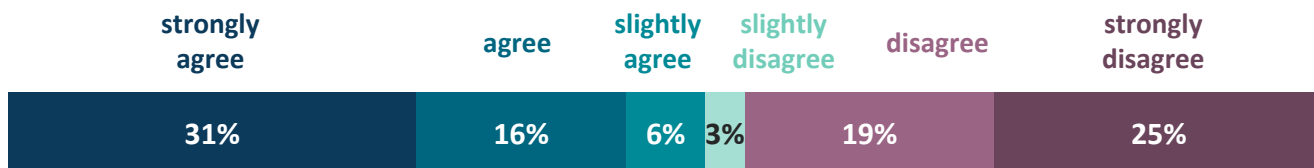
Note: No questions were asked regarding Chapter 4: Modal Plan Development of the TMP.

## CHAPTER 5: MULTIMODAL STREETS PLAN

Data based on the 32 responses to this question.

Chapter 5 focuses on how to maximize the existing transportation system’s capacity, improve operational efficiency of moving people and freight, and address critical safety issues along corridors and at intersections. The plan also includes dedicating space for transit, bicycle and pedestrian travel modes.

**Participants were asked if the recommendations in Chapter 5 and associated street projects in Appendix D will address the safety, reliability and connectivity needs for all modes of transportation along corridors and at intersections in Westminster.**



Note: Percentages may not total to 100% due to rounding.

## CHAPTER 6: TRANSIT PLAN

Data based on the 33 responses to this question.

Chapter 6 describes how the City of Westminster, in coordination with partners, can play a role in enhancing transit service and improving transit rider experience, keeping in mind that transit service in Westminster is provided by the Regional Transportation District (RTD).

Participants were asked if the transit recommendations included in Chapter 6 and the associated transit improvement projects in Appendix D will improve the reliability of transit service and quality of transit facilities in Westminster.



## CHAPTER 7: BICYCLE PLAN

Data based on the 34 responses to this question.

Chapter 7 includes Westminster’s future bicycle network that will provide safer and low-stress bicycle facilities (e.g. bike lanes) and will improve multimodal connections between neighborhoods and destinations.

Participants were asked if the recommendations included in Chapter 7 and associated bicycle improvement projects in Appendix D will provide a safer and more connected bicycle network in Westminster.



Note: Percentages may not total to 100% due to rounding.

## CHAPTER 8: PEDESTRIAN PLAN

Data based on the 31 responses to this question.

Chapter 8 is comprised of a network of over 100 projects that include completing sidewalk gaps, providing improved pedestrian access to key destinations like schools and transit stops, and improving the safety of street crossings.

Participants were asked if the recommendations included in Chapter 8 and associated pedestrian improvement projects in Appendix D will increase the safety, accessibility and connectivity for pedestrians in Westminster.



## CHAPTER 9: TRANSPORTATION-SUPPORTIVE PROGRAMS AND TECHNOLOGY

Data based on the 28 responses to this question.

Chapter 9 provides an overview of key programs and technology that the City, in coordination with partners, should evaluate, expand and integrate to support Westminster’s transportation system and to ensure successful implementation and the on-going operations and maintenance of existing transportation improvements as well as those improvements identified in the TMP.

Participants were asked if the programmatic and technology recommendations presented in Chapter 9 are important for the City and partners to continue to explore or expand for potential integration into Westminster.



Note: Percentages may not total to 100% due to rounding.

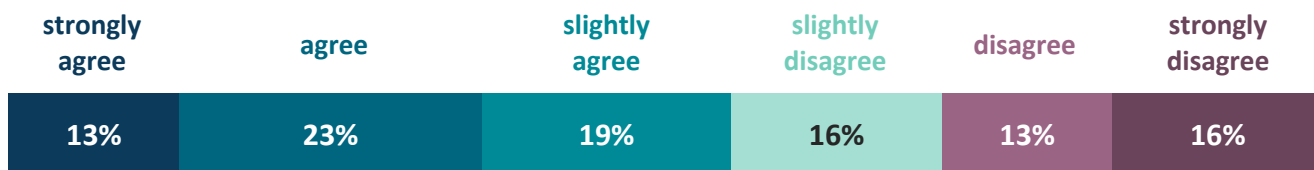


## CHAPTER 10: STRATEGIES AND ACTIONS

Data based on the 31 responses to this question.

Chapter 10 presents the strategies and near-term and future actions to provide a comprehensive multimodal transportation system for Westminster and to ensure improvements and investments along corridors and at intersections are successfully implemented.

Participants were asked if the recommended strategies and actions presented in Chapter 10 will address the transportation and mobility needs of Westminster.



## CHAPTER 11: IMPLEMENTATION AND NEXT STEPS

Data based on the 26 responses to this question.

Chapter 11 describes the early actions and next steps for the City, in coordination with partners, which should begin over the next few years to implement the Transportation & Mobility Plan.

Participants were asked if the early actions identified in Chapter 11 are the important first steps the City and partners should prioritize and begin initiating.

