



# FEDERAL BOULEVARD

## MULTIMODAL TRANSPORTATION STUDY

# Working Group Meeting #1

Kickoff - Joint Technical and Stakeholder Working Groups

August 20, 2020



# Virtual Meeting

## Ground Rules

- Webex basics:
  - Maintain mute
  - Video
  - Chat box
  - Hand raise
- Facilitation
- Meeting note taker and producer
- Virtual breakouts



# Welcome

## Draft Agenda

- Introductions and meeting purpose
- Project overview
- Project existing conditions
- Review draft vision for the study
- Breakout groups
- Next steps



# Introductions and Meeting Purpose

# Introductions

## Who We Are

- The 'Partnership' management team:
  - Adams County:  
**Chris Chovan**  
Senior Transportation and Mobility Planner
  - City of Federal Heights:  
**Tim Williams**  
Community Development Director
  - City of Westminster:  
**Debra Baskett**  
Senior Transportation and Mobility Planner
- Participant role call



# Working Group Members Roll Call...

Brian Staley, Adams County - Deputy Director  
for Public Works

Jill Jennings Golich, Adams County - Director  
of the Community & Economic Development

Libby Tart, Adams County - Senior Long Range  
Planner

Adam Parks, CDOT

Jason Igo, CDOT

Andrew Stratton, CDOT

Moira Moon, CDOT Division of Transit & Rail

Alex Edwards, City of Federal Heights -  
Assistant City Engineer

Jeff Hill, City of Federal Heights - City  
Engineer

Renaë Stavros, City of Federal Heights - City  
Planner

Don Stahurski, City of Federal Heights - Public  
Works Director

Stephanie Ashmann, City of Westminster -  
Senior Planner

Heath Klein, City of Westminster -  
Transportation Engineer

Kristina Evanoff, City of Westminster -  
Transportation and Mobility Planner

Brad Calvert, Denver Regional Council of  
Governments (DRCOG)

Matthew Helfant, Denver Regional Council of  
Governments (DRCOG)

Kristin Kenyon, Federal Transit Administration  
Doug Monroe, RTD

Julie Browman, Adams County Fire Rescue  
Adams County School District 14

Ann Long, Aria Cohousing

Pete Piccolo, Bicycle Colorado

Karen Stuart, CDOT Transportation  
Commission

Lisa Nelson, Center for People with Disabilities  
Colorado Cross Disability Coalition

Erin Mooney, Cultivando

Andrea DeCosmo, Front Range Community  
College

Daniela Sanchez, Growing Home

Yvonne Fischbach, Hyland Hills Park and  
Recreation District (and Water World)

Deya Zavala, Mile High Connects  
North Federal Baptist Church

Steve Gosselin, North Metro Fire District  
Sue Scherer, Regis University

Vince Buzek, RTD Board Director  
Carson Priest, SMART Commute

Commander Scott Takahashi, Westminster  
Police Department

Todd Johnson, Terra Forma Solutions -  
President

Shelia Lynch, Tri-County Health  
Linnea Bjorkman, Maiker Housing Partners  
Westminster School District #50

Juliet Abdel, Westminster Chamber of  
Commerce

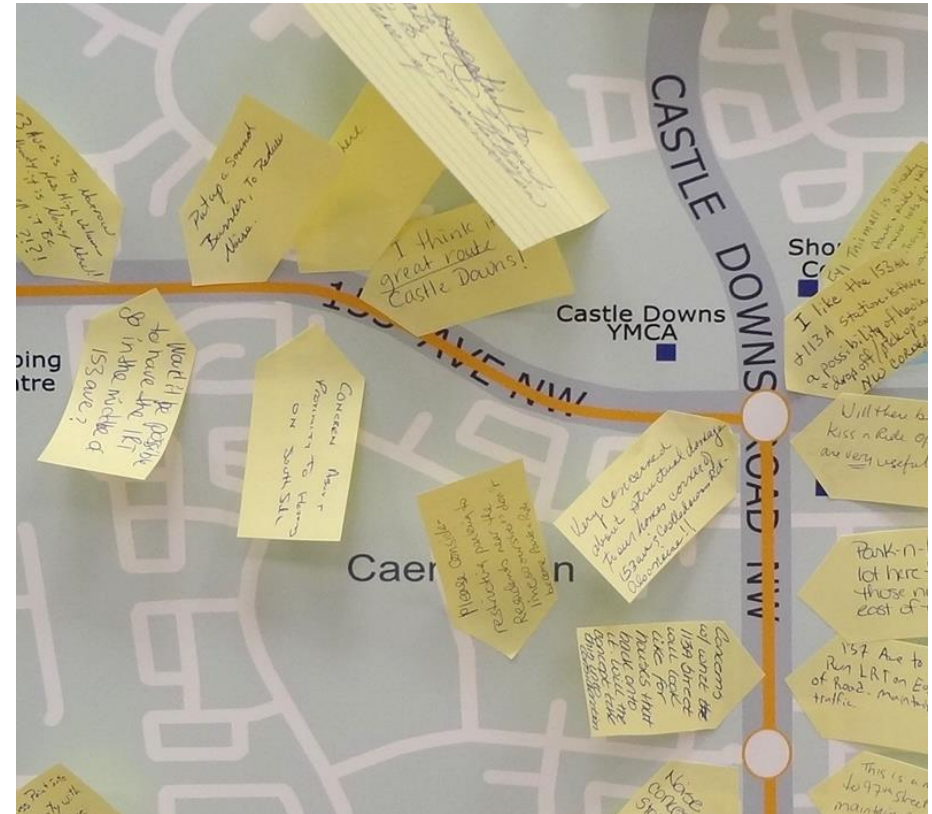
Eric Linnenburger, Westminster Fire  
Department

Eric Kornacki, South Adams County Non Profit  
Support

# Meeting Purpose

## This Meeting Will

- Kick off the stakeholder and technical teams
- Connect stakeholders and the project team members
- Clarify the role of the stakeholder teams
- Explain the focus of the project and background information
- Provide opportunity for input and questions



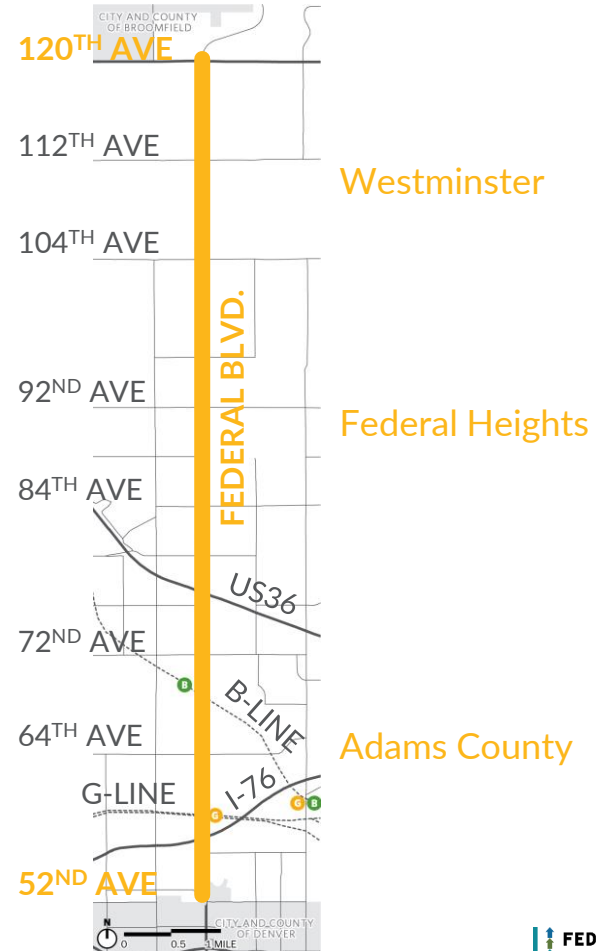
# Project Overview



# Study Area

## Our Study Area

- The 'Partnership'
  - Three jurisdictions
- 120th to 52nd and Lowell to Zuni
- Critical role of CDOT, RTD, and other agencies
  - Adam Parks  
Resident Engineer, Region 1  
North/Turnpike Residency (CDOT)
  - Doug Monroe  
Manager, Corridor Planning - Operations  
(RTD)



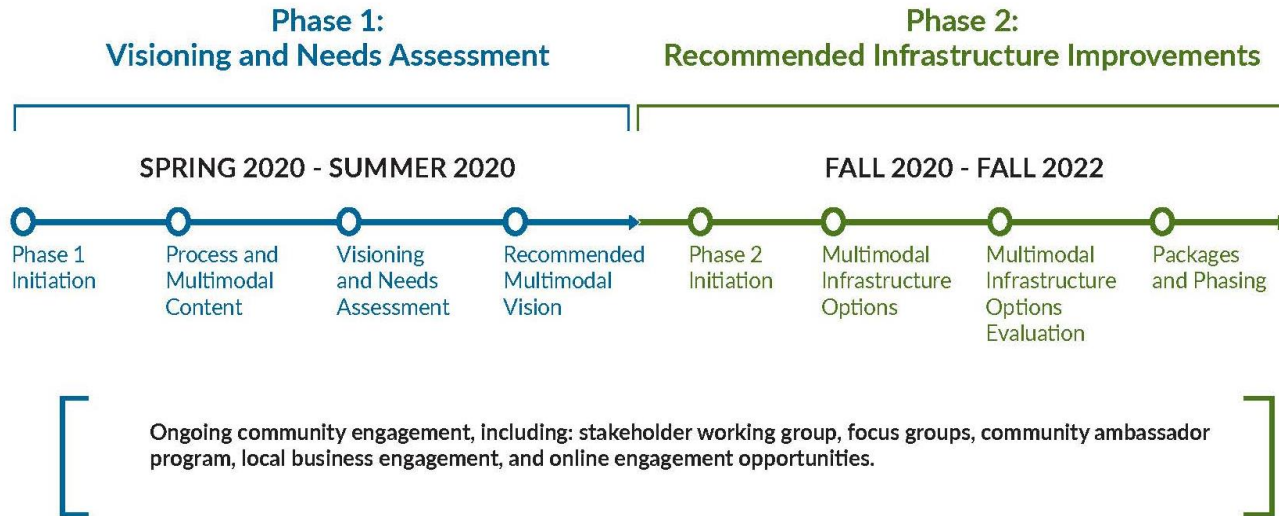
# Working Groups

## Roles and Expectations

- 4-5 meetings over next year and a half
- Share information with your constituents
- Provide feedback from the groups you represent
- Provide technical guidance and expertise



# Study Process



# Public Engagement

## Approach and Techniques

- Ambassador program
- Business outreach
- Broad public outreach
  - Website, hotline, and email
  - Online questionnaires, public meetings, and engagement opportunities
  - Outreach materials
  - Cultural outreach



# Existing Conditions Approach and Initial Findings

# Project Limits and Character Zones

**ZONE C: BETWEEN 81ST AND 105TH AVENUE**  
*Auto-Oriented Residential/Commercial, Planned Mixed-Use Center*



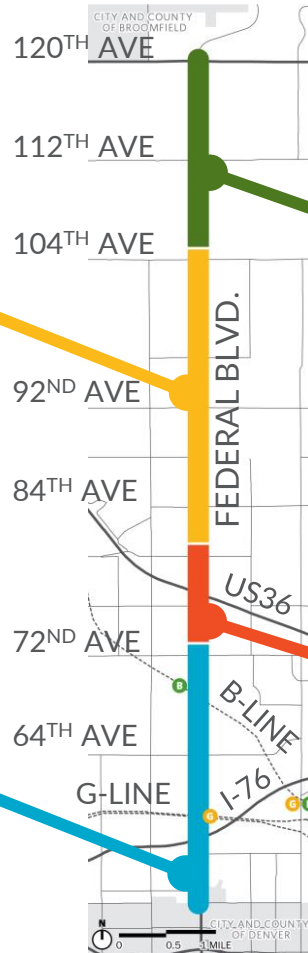
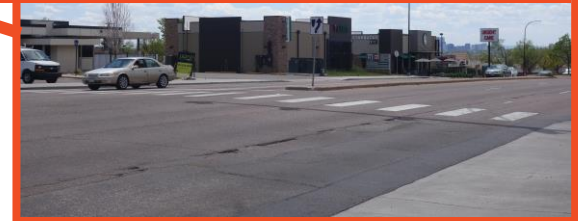
**ZONE D: BETWEEN 105TH AND 120TH AVENUE**  
*The Corridor's Northern Gateway, Residential With Parks/Open Space/Trails*



**ZONE A: BETWEEN 52ND AND 73RD AVENUE**  
*The Corridor's Southern Gateway, Several Activity Areas at The Heart*



**ZONE B: BETWEEN 73RD AND 81ST AVENUE**  
*Transition Area, Extension of Westminster Station TOD/Historic Westminster*



# Existing Conditions - Multimodal Access/Safety/Comfort

## Significant Connections to Regional Transit Service

3 RTD Rail Stations  
(G & B Lines)



Up to 15min  
Bus Service (Peak)



## Important Corridor within the Local/Regional Mobility Network

Most Commuters  
Leave Study Area



Connections To US-36,  
I-76, and I-70



Several Intersections  
Near/Over capacity  
(Up To 50K AADT)



Key Freight Corridor  
(Up To 3% of AADT)



## Significant Access to Regional Trail System

4 Trails



Best Existing Low-Stress  
Crossing Bike Routes



## Challenging Experience for Walking/Biking

Large sidewalk gaps



13 Pedestrians & Bicycles  
Killed/Seriously Injured  
(2016-2018)



Long Distances Between  
Signalized Crossings  
(7min walk)

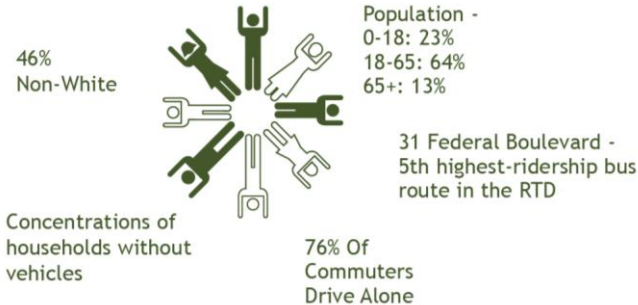


5 High Injury Network  
“Critical Corridor” Segments (DRCOG)



# Existing Conditions - Destinations and Demographics

## A Range of Corridor Users



## Historically Auto-Oriented Development



## Numerous Factors that Influence Multimodal Demand



## Significant Investment in Corridor/Regional Destinations





# Review Draft Vision for the Study

# Draft Vision for the Study

## The Federal Boulevard Multimodal Transportation Study will...

- Leverage the Partnership
- Build on past studies recommendations
- Work collaboratively with local stakeholders
- Define solutions that are not limited by jurisdictional boundaries
- Focus on safe, equitable, consistent, and high-quality options
- Build on existing multimodal facilities (trails, rail, etc.)
- Identify attainable alternatives to driving alone
- Identify innovative funding opportunities
- Generate recommendations for walking, rolling, biking, transit, driving, and freight
- Provide the basis for future funding requests

# Breakout Groups

# Breakout Group Instructions

## Instructions

- Three virtual groups (random)
  - Automatic virtual rooms
  - Selection box
  - Transition pause
  - Any issues – use chat box
- Facilitators
  - Kiernan (*Team Water World*)
  - Chris (*Team Clear Creek*)
  - Tara (*Team Westminster Station*)
- Discussions (40 min)
- Report out (15 min – 5 min per team)



# Breakout Team

## Team Details

- Focus on the 'users' perspective
  - No car
  - Transit/multimodal
  - Business
  - Freight
- Consider their needs and supporting improvements
- Discuss your thoughts on priority improvements



# Cameron

Retired veteran  
Lives in Federal Heights  
Does not own a car  
Walks, takes transit, uses Uber

## NO ACCESS TO A CAR

**Need/Issue:** I would like to feel safe and comfortable traveling to and from my house to get to the doctor, run errands, and get to bus stops.



Sidewalk improvements



High quality bus stops and service



Traffic calming and safety improvements



Crosswalk improvements

# Amita

Civil engineer

Lives in Adams County

Commutes to downtown Denver

Walks, takes transit, would like to bike (but is not comfortable)

## TRANSIT COMMUTER

**Need/Issue:** I would like to be able to get to my job (especially downtown Denver) without worrying about how long it's going to take.



Improved traffic operations



Comfortable and safe walking and biking connections



Improved transit connections



Transit reliability

# Caroline

Pharmacy owner

Lives in Westminster

Concerned with customer access to her business

Personally drives to her store daily

## BUSINESS OWNER

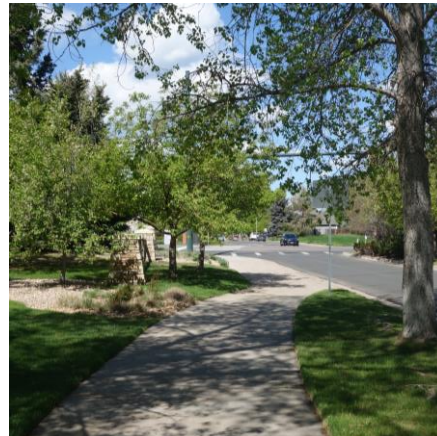
**Need/Issue:** I want to make sure people aren't frustrated trying to get in and out of my business.



Accommodate vehicular travel



Better traffic controls to facilitate business access



Aesthetics



Intersection improvements



# Dale

Drives for a major delivery company  
Lives in Westminster  
Route includes north Federal  
Drives the route 5 days a week for deliveries

## FREIGHT DRIVER

**Need/Issue:** I'd like to have reliable ways to get from industrial facilities to highways. Especially in the southern portion of the corridor.



Access improvements



Travel lane widths



Clear freight access policies (heavy loads, etc.)



Delivery Parking

# Report Out

## Five Minutes Per Team

- Team *Water World* report out
- Team *Clear Creek* report out
- Team *Westminster Station* report out



# Next Steps

# Next Steps

## Closeout and Action Items

- Summary notes, presentation, and follow-up
- Next meeting (fall)
  - Advancing mobility options and input
- Closing remarks
  - The Partnership (Debra Baskett)
- Thank you!



# Thank You!



**FEDERAL BOULEVARD**  
MULTIMODAL TRANSPORTATION STUDY