


# Stormwater Pollutants, Sources and Impacts



Pollutant	Sources	Impacts
<p data-bbox="435 993 586 1024"><b>Sediment</b></p> 	<p data-bbox="850 1031 1127 1377">Construction sites; eroding stream banks and lake shores; winter sand and salt applications; vehicle/boat washing; agricultural sites (runoff)</p>	<p data-bbox="1170 1031 1411 1377">Destruction of plant and fish habitat; transportation of attached oils, nutrients and other pollutants; increased maintenance costs, flooding</p>

**Nutrients  
(phosphorus and nitrogen)**



Fertilizers; malfunctioning septic systems; livestock, bird and pet wastes; vehicle/boat washing; grey water; decaying grass and leaves; sewer overflows; leaking trash containers; leaking sewer lines.

Increased potential for nuisance or toxic algal blooms; increased potential for hypoxia/anoxia (low levels of dissolved oxygen which result in death for aquatic organisms)

**Hydrocarbons (petroleum compounds)**



Vehicle and equipment leaks; vehicle and equipment emissions; pesticides; fuel spills; equipment cleaning; improper fuel storage & disposal.

Toxic to humans and aquatic organisms at low levels.

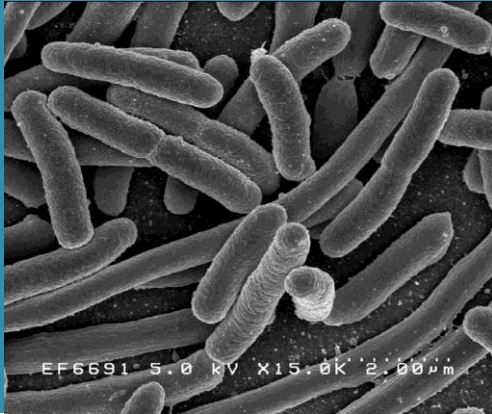
**Heavy Metals**



Vehicle brake and tire wear; vehicle/equipment exhaust; batteries; galvanized metal; paint and wood preservatives; fuels; pesticides; cleaners

Toxic at low levels; drinking water contamination.

### Pathogens (Bacteria)



Livestock, bird and pet wastes; malfunctioning septic systems; sewer overflows; damaged sanitary lines.

Risk to human health leading to closure of shellfish areas and swimming areas; drinking water contamination

### Toxic Chemicals



Pesticides; dioxins; PCB's; spills; illegal discharges and leaks.

Toxic to humans and aquatic life at low levels.

### Debris/Litter



Improper waste disposal and storage; fishing gear; leaking rubbish containers; cigarette butts; littering.

Potential risk to human and aquatic life; aesthetically displeasing.